

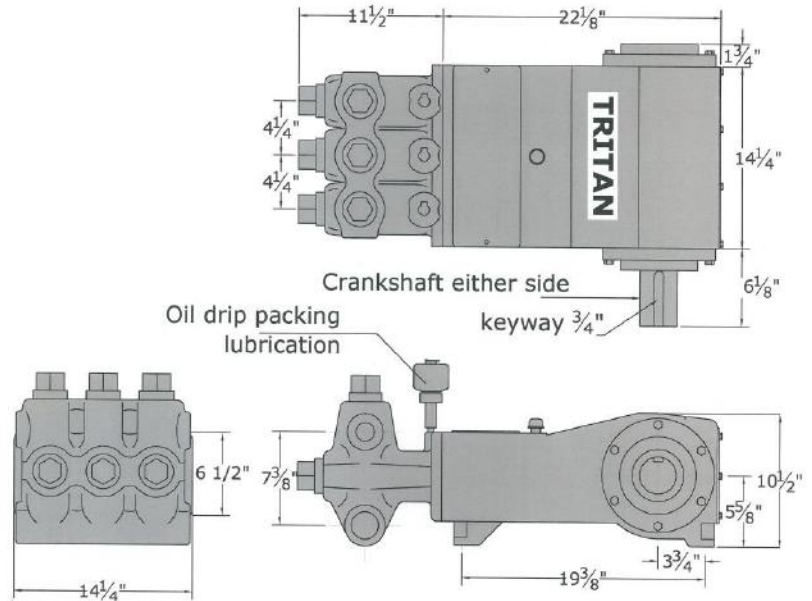
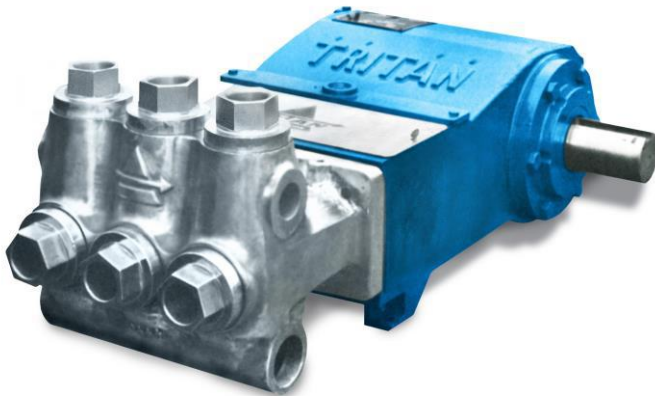


McFarland – TriTan, LLC
 The “High Pressure” Specialists!

Series 3085 AB/DI/SS

**API 674 Compliant
 Triplex Plunger Pump**

Pressure to 5,000 PSI | Flow to 115 GPM | Power to 85 HP



| DISPLACEMENT VOLUME (100% VOL.EFF.) | | | PUMP SPEED IN CRANKSHAFT REVOLUTIONS PER MINUTE | | | | | | | | |
|-------------------------------------|-----|-------|---|------------------|-----------------------|------------------|--------------|------------------|------------------|--------|--|
| | | | 1" 5,000 PSI | 1-1/4" 4,500 PSI | 1-1/2" 4,130 PSI | 1-3/4" 2,960 PSI | 2" 2,260 PSI | 2-1/4" 2,000 PSI | 2-1/2" 1,440 PSI | | |
| GPM | BPH | BPD | | | | | | | | | |
| 2 | 3 | 67 | 78 | 50 | | | | | | | |
| 5 | 7 | 168 | 196 | 125 | 87 | 64 | | | | | |
| 8 | 11 | 268 | 314 | 201 | 139 | 102 | 78 | 62 | 50 | | |
| 10 | 14 | 336 | 392 | 251 | 174 | 128 | 98 | 77 | 62 | | |
| 12 | 17 | 403 | 500 | 301 | 209 | 154 | 118 | 93 | 75 | 52 | |
| 20 | 28 | 672 | | 500 | 348 | 256 | 196 | 155 | 125 | 87 | |
| 24 | 34 | 806 | | | 418 | 307 | 235 | 186 | 150 | 104 | |
| 28 | 39 | 940 | | | 500 | 358 | 274 | 217 | 175 | 122 | |
| 39 | 55 | 1,310 | | | | 500 | 382 | 302 | 245 | 170 | |
| 45 | 63 | 1,512 | | | | | 441 | 349 | 282 | 196 | |
| 51 | 71 | 1,714 | | | | | 500 | 395 | 320 | 222 | |
| 56 | 78 | 1,882 | | | | | | 434 | 351 | 244 | |
| 60 | 84 | 2,016 | | | | | | 465 | 376 | 261 | |
| 64 | 90 | 2,150 | | | | | | 500 | 401 | 278 | |
| 73 | 102 | 2,452 | | | | | | | 458 | 318 | |
| 80 | 112 | 2,688 | | | | | | | 500 | 348 | |
| 100 | 114 | 3,360 | | | | | | | | 485 | |
| 115 | 161 | 3,864 | | | | | | | | 500 | |
| GPM FACTOR | | | 0.0255 | 0.0398 | 0.0574 | 0.0781 | 0.1020 | 0.1291 | 0.1594 | 0.2295 | |
| BPH FACTOR | | | 0.0364 | 0.0569 | 0.0820 | 0.1116 | 0.1457 | 0.1844 | 0.2277 | 0.3279 | |
| | | | 500 Max RPM | | BHP=(GPM XPSI) / 1543 | | | | | | |
| | | | All figures based on 100% volumetric efficiency | | | | | | | | |

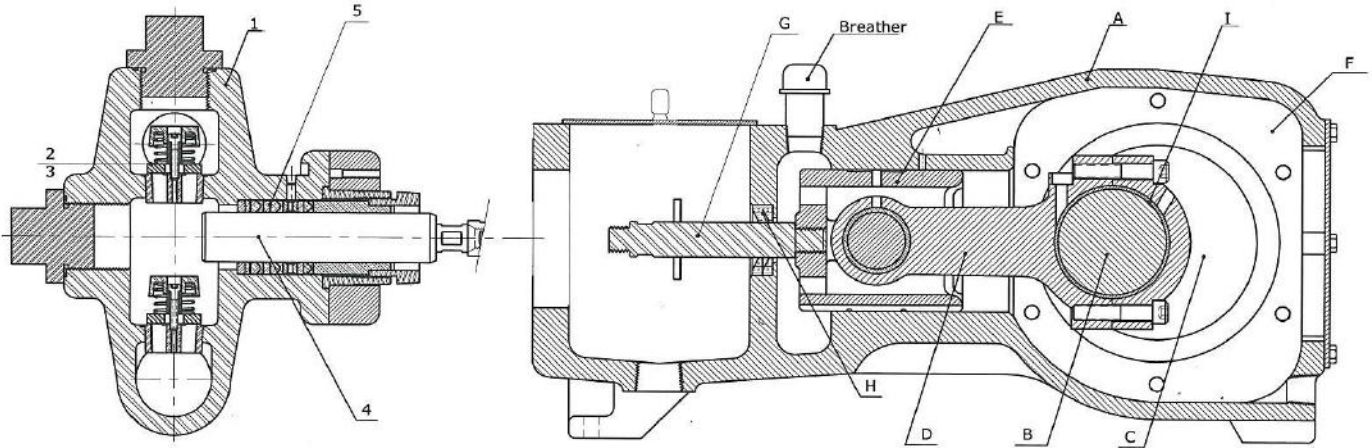
921 Seaco Court, Deer Park, TX 77536, USA

Tel: 1-713-864-3366 / Fax: 1-713-864-3252

Email: sales@tritanpump.com

www.tritanpump.com

Series 3085 AB/DI/SS



SPECIFICATIONS

- * Number of Plungers 3
- * Stroke Length: 2-1/2" (63.5 mm)
- * Plunger Load 7960 lbs
- * Pump Weight 585 lbs
- * Oil Capacity 1.5 U.S gallons
- * Suction Connection 2" NPT
- * Discharge Connection 1 -1/4"

FLUID END

- 1) Fluid End Body:** One piece cast ductile iron or Aluminum Bronze.
- 2) Valves:** A- CELCON Valve-Bronze seat or
B- CELCON Valve- stainless steel seat.
C- Hardened stainless steel valve & seat.
- 3) Tapered seated valve decks.**
- 4) Plungers:** Plunger materials available are:
17-4PH (standard), colmonoy coated stainless steel, ceramic, and tungsten carbide.
- 5) Packing Selection:** For various fluids

Services:

- * Crude Oil
- * Fresh Water
- * Salt Water
- * Corrosive Fluids

POWER END

- A) Power Frame:** High strength ductile iron alloy casting with heavy wall sections well ribbed to insure rigid construction, totally enclosed with sealed access cover
- B) Crankshaft:** Ductile iron for inherent shock load damping, mounted with center line of shaft on center line of cross-head. Crankshafts may extend from either side.
- C) Crankshaft Bearings:** Interchangeable heavy duty roller bearing. Minimum L-10 rated life of 60,000 hours at maximum RPM.
- D) Connecting Rods:** All TriTan plunger pumps are equipped with H-type connecting rods, with replaceable inserts.
- E) Crossheads:** High strength alloy castings, cross head and guides are Cylindrical for maximum bearing area and alignment, Crosshead pins are hardened and ground steel.
- F) Lubrication:** All power end parts are lubricated by splash system from oil in crankcase reservoir. Power frame has an oil return channel, from front of crossheads back to crankcase, to permit constant circulation of oil and to help keep oil cool.
- G) Pony Rods:** Pony rods are polished stainless steel, independent of crosshead and plunger.
- H) Pony Rod Seal:** Double acting lip seals around pony rod- prevents oil leakage from the inside and precludes contamination entering from the outside.
- I) Connecting Rod Bearings:** Similar to those in finest diesel Engine for shock resistance and long wear life.



McFarland – TriTan, LLC
921 Seaco Court, Deer Park, TX 77536
Tel :1-713-864-3366 | Fax : 1-713-864-3252
Email: sales@tritanpump.com, www.tritanpump.com

921 Seaco Court, Deer Park, TX 77536, USA

Tel: 1-713-864-3366 / Fax: 1-713-864-3252

Email: sales@tritanpump.com

www.tritanpump.com

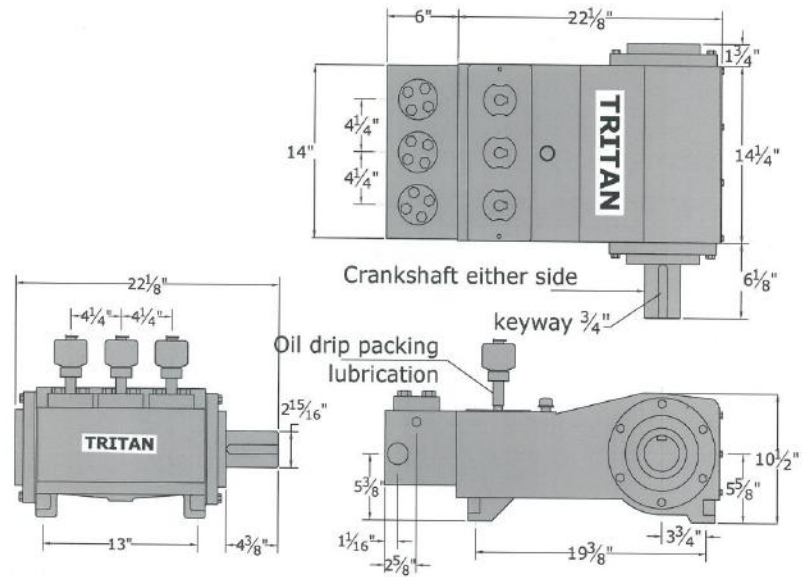


McFarland – TriTan, LLC
 The “High Pressure” Specialists!

Series 3085 SX

**API 674 Compliant
 Triplex Plunger Pump**

Pressure to 40,000 PSI | Flow to 24 GPM | Power to 85 HP



| DISPLACEMENT VOLUME (100% VOL.EFF.) GPM BPH BPD | | | PUMP SPEED IN CRANKSHAFT REVOLUTIONS PER MINUTE | | | | | | | |
|---|-----|-----|---|-----------------------|-----------------------|-----------------------|---------------------|------------------------|------------------------|------------------------|
| | | | 3/8" 40,000 PSI | 5/8" 25,500 PSI | 3/4" 18,000 PSI | 7/8" 13,200 PSI | 1" 10,000 PSI | 1-1/8" 8,000 PSI | 1-1/4" 6,400 PSI | 1-3/8" 5,300 PSI |
| 0.2 | 0.3 | 7 | 56 | | | | | | | |
| 0.3 | 0.4 | 10 | 83 | | | | | | | |
| 0.5 | 0.7 | 17 | 139 | 50 | | | | | | |
| 1 | 1.4 | 34 | 277 | 100 | 70 | 51 | | | | |
| 2 | 3 | 69 | | 200 | 140 | 102 | 78 | 61 | 50 | |
| 3 | 4 | 103 | | 300 | 210 | 154 | 117 | 93 | 75 | 62 |
| 5 | 7 | 168 | | 500 | 350 | 256 | 196 | 155 | 125 | 103 |
| 7 | 10 | 245 | | | 500 | 359 | 274 | 217 | 175 | 145 |
| 9 | 13 | 307 | | | | 461 | 352 | 278 | 226 | 187 |
| 10 | 14 | 336 | | | | 500 | 392 | 309 | 251 | 207 |
| 12 | 17 | 403 | | | | | 500 | 371 | 301 | 249 |
| 14 | 20 | 470 | | | | | | 433 | 352 | 290 |
| 16 | 22 | 538 | | | | | | 500 | 402 | 332 |
| 18 | 25 | 605 | | | | | | | 452 | 373 |
| 20 | 28 | 672 | | | | | | | 500 | 414 |
| 22 | 30 | 739 | | | | | | | | 456 |
| 24 | 34 | 806 | | | | | | | | 500 |
| GPM FACTOR | | | 0.0036 | 0.100 | 0.0143 | 0.0195 | 0.0255 | 0.0323 | 0.0398 | 0.0482 |
| BPH FACTOR | | | 0.0051 | 0.0143 | 0.0204 | 0.0278 | 0.0364 | 0.0461 | 0.0569 | 0.0689 |
| | | | 500 Max RPM BHP=(GPM XPSI) / 1543 All figures based on 100% volumetric efficiency | | | | | | | |

Applications:

- * Hydrostatic Testing
- * Water Blasting/
 Jetting
- * Chemical Injection
- * Concrete Demolition
- * Water Disposal

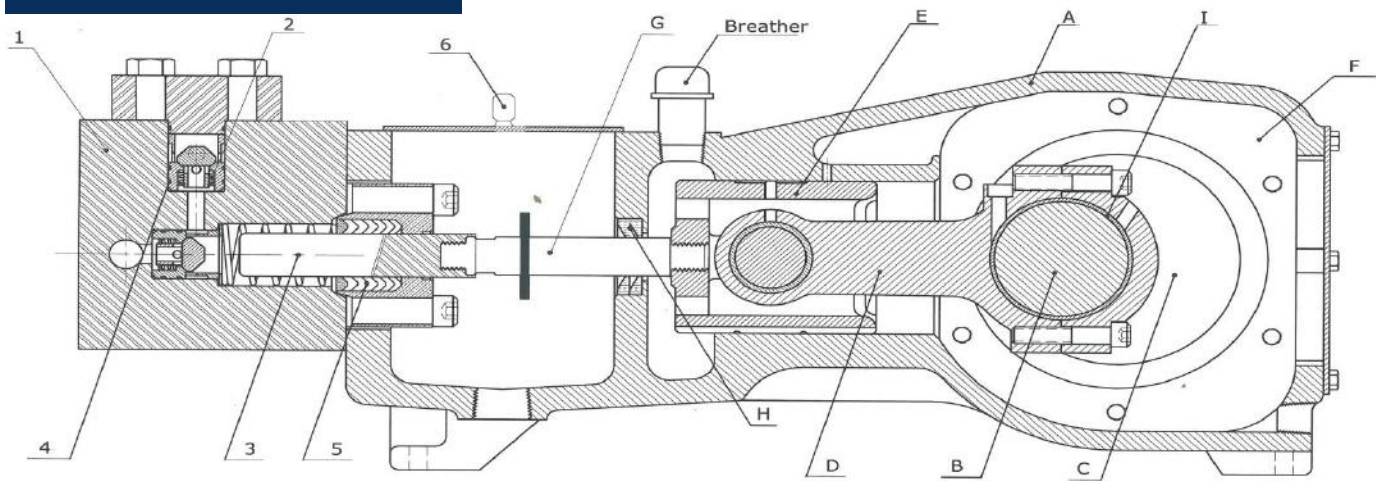
921 Seaco Court, Deer Park, TX 77536, USA

Tel: 1-713-864-3366 / Fax: 1-713-864-3252

Email: sales@tritanpump.com

www.tritanpump.com

Series 3085 SX



SPECIFICATIONS

- * Number of Plungers 3
- * Stroke Length: 2-1/2" (63.5 mm)
- * Plunger Load 7960 lbs
- * Pump Weight 585 lbs
- * Oil Capacity 1.5 U.S gallons
- * Suction Connection 1-1/2" NPT
- * Discharge Connection 1/2" NPT or Autoclave

FLUID END

- 1) Fluid End Body:** Forged stainless steel high pressure fluid block.
- 2) Valves:** All valves assemblies completely interchangeable- No selective fits required. Valves are all vertical, reducing valve guide friction found in Horizontal valves.
- 3) Plungers:** Plunger materials available are: 17-4PH (standard), colmonoy coated stainless steel, ceramic.
- 4) Valve Seats:** O-Ring sealed and "Sandwiched" in place. Reversible for extra-long life. No threads or tight fit. Replaced in minutes.
- 5) Plunger Packing:** Non-Adjustable or spring loaded plunger packing-Changed in minutes without fluid block removal.
- 6) Plunger Lubrication:** Water packing lubrication is standard for all stainless steel high pressure pumps. Grease, Oil drip, and forced feed lubrication are furnished as designated.

POWER END

- A) Power Frame:** High strength ductile iron alloy casting with heavy wall sections well ribbed to insure rigid construction, totally enclosed with sealed access cover
- B) Crankshaft:** Ductile iron for inherent shock load damping, mounted with center line of shaft on center line of cross-head. Crankshafts may extend from either side.
- C) Crankshaft Bearings:** Interchangeable heavy duty roller bearing. Minimum L-10 rated life of 60,000 hours at maximum RPM.
- D) Connecting Rods:** All TriTan plunger pumps are equipped with H-type connecting rods, with replaceable inserts.
- E) Crossheads:** High strength alloy castings, cross head and guides are Cylindrical for maximum bearing area and alignment, Crosshead pins are hardened and ground steel.
- F) Lubrication:** All power end parts are lubricated by splash system from oil in crankcase reservoir. Power frame has an oil return channel, from front of crossheads back to crankcase, to permit constant circulation of oil and to help keep oil cool.
- G) Pony Rods:** Pony rods are polished stainless steel, independent of crosshead and plunger.
- H) Pony Rods Seals:** Double acting lip seals around pony rod-prevents oil leakage from the inside and precludes contamination entering from the outside.
- I) Connecting Rod Bearings:** Similar to those in finest diesel engine for shock resistance and long wear life.



McFarland – TriTan, LLC
921 Seaco Court, Deer Park, TX 77536
Tel :1-713-864-3366 | Fax : 1-713-864-3252
Email: sales@tritanpump.com, www.tritanpump.com

921 Seaco Court, Deer Park, TX 77536, USA

Tel: 1-713-864-3366 / Fax: 1-713-864-3252

Email: sales@tritanpump.com

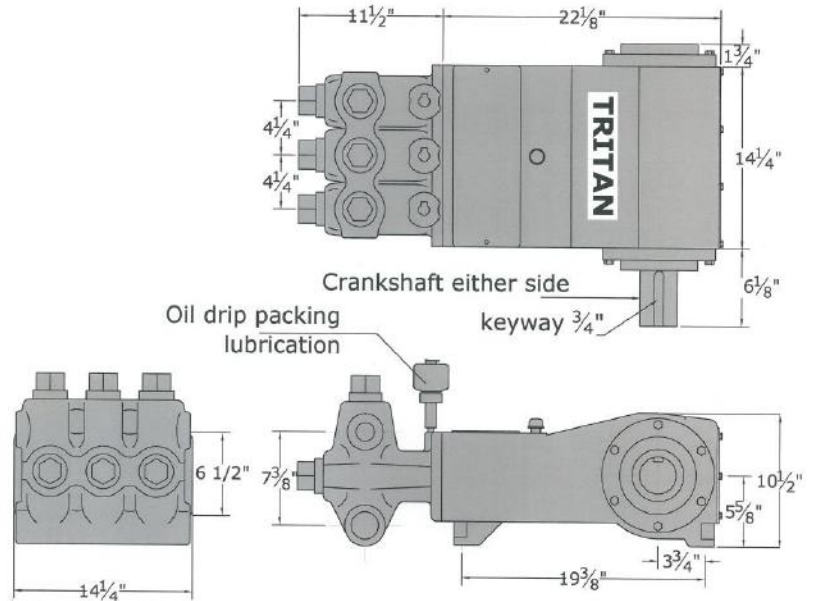
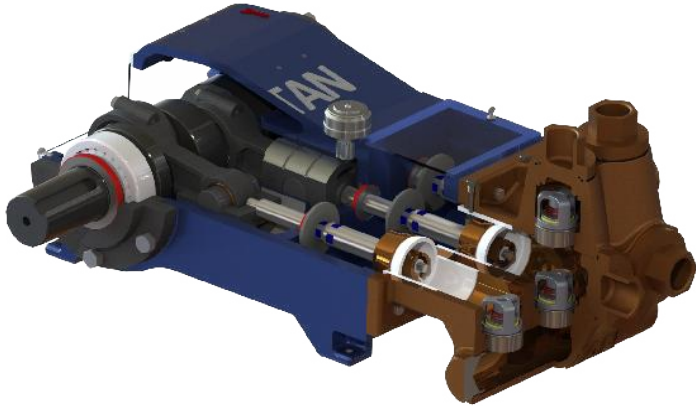
www.tritanpump.com



McFarland – TriTan, LLC
The “High Pressure” Specialists!

Series 3085
The 'MudHog'
API 674 Compliant
Triplex Plunger Pump

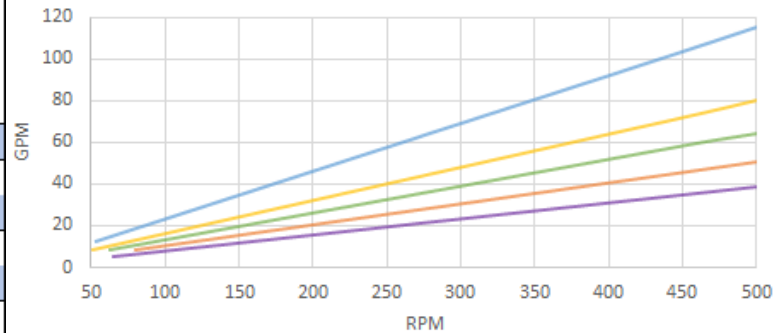
Pressure to 3,000 PSI | Flow to 115GPM | Power to 85 HP



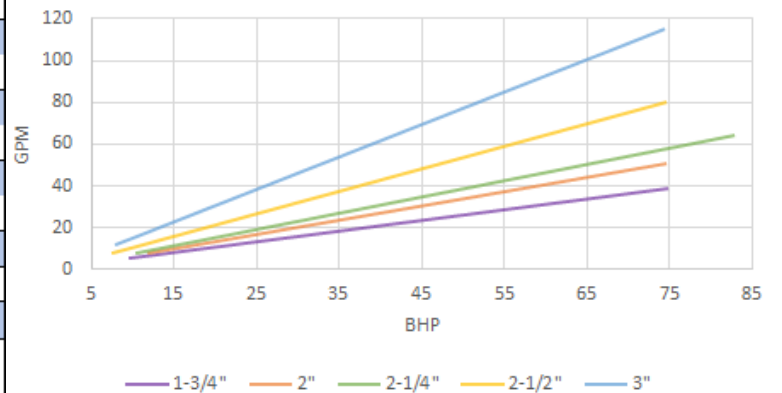
| DISPLACEMENT VOLUME (100% VOL. EFF.) | | | PUMP SPEED IN CRANKSHAFT RPM | | | | |
|---|-------|--------|------------------------------|-----------|-----------|-----------|-----------|
| | | | 1-3/4" | 2" | 2-1/4" | 2-1/2" | 3" |
| GPM | BPH | BPD | 2960 PSI | 2,260 PSI | 2,000 PSI | 1,440 PSI | 1,000 PSI |
| 5 | 7.1 | 171.4 | 64 | | | | |
| 8 | 11.4 | 274.3 | 102 | 78 | 62 | 50 | |
| 10 | 14.3 | 342.9 | 128 | 98 | 77 | 63 | |
| 12 | 17.1 | 411.4 | 154 | 118 | 93 | 75 | 52 |
| 20 | 28.6 | 685.7 | 256 | 196 | 155 | 125 | 87 |
| 24 | 34.3 | 822.9 | 307 | 235 | 186 | 151 | 105 |
| 28 | 40.0 | 960.0 | 359 | 275 | 217 | 176 | 122 |
| 39 | 55.7 | 1337.1 | 500 | 382 | 302 | 245 | 170 |
| 45 | 64.3 | 1542.9 | | 441 | 349 | 282 | 196 |
| 51 | 72.9 | 1748.6 | | 500 | 395 | 320 | 222 |
| 56 | 80.0 | 1920.0 | | | 434 | 351 | 244 |
| 60 | 85.7 | 2057.1 | | | 465 | 376 | 261 |
| 64 | 91.4 | 2194.3 | | | 500 | 402 | 279 |
| 73 | 104.3 | 2502.9 | | | | 458 | 318 |
| 80 | 114.3 | 2742.9 | | | | 500 | 349 |
| 100 | 142.9 | 3428.6 | | | | | 436 |
| 115 | 164.3 | 3942.9 | | | | | 500 |

500 Max RPM BHP=(GPM*PSI)/1543
All Figures based on 100% volumetric efficiency

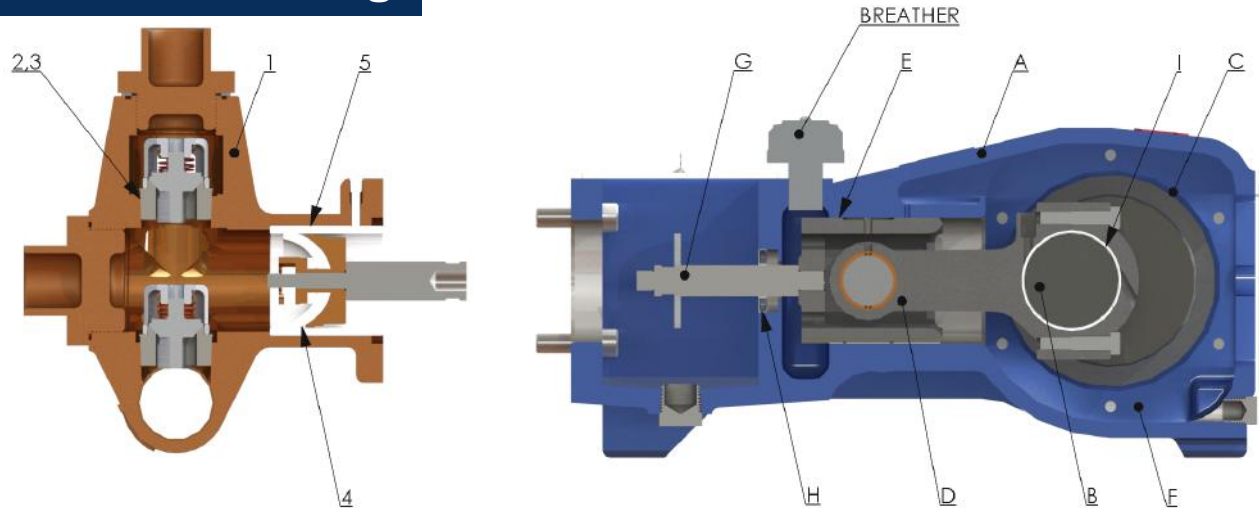
RPM vs GPM



BHP vs GPM



Series 3085 - 'MudHog'



SPECIFICATIONS

* Number of Plungers 3 * Stroke Length: 2-1/2" (63.5 mm) * Plunger Load 7960 lbs * Pump Weight 585 lbs
 * Oil Capacity 1.5 U.S gallons * Suction Connection 2" NPT * Discharge Connection 1 -1/4"

FLUID END

- 1) Fluid End Body:** One piece cast ductile iron or Aluminum Bronze.
- 2) Valves:** A- Stainless Abrasion Resistant Valves*
 B- Stainless Ball valves*
- *Exotic Materials available upon request
- 3) Tapered seated valve decks.**
- 4) Pistons:** Pistons cups made of Supergole nitrile with stainless piston rods and corrosion resistant hardware
- 5) Ceramic Liner:** For added durability and abrasion resistance during service

Services:

- * **Horizontal Drilling**
- * **Vertical Drilling**
- * **Mud Pumping**
- * **Salt Water**
- * **Corrosive Fluids**
- * **Deicing Operations**

POWER END

- A) Power Frame:** High strength ductile iron alloy casting with heavy wall sections well ribbed to insure rigid construction, totally enclosed with sealed access cover
- B) Crankshaft:** Ductile iron for inherent shock load damping, mounted with center line of shaft on center line of cross-head. Crankshafts may extend from either side.
- C) Crankshaft Bearings:** Interchangeable heavy duty roller bearing. Minimum L-10 rated life of 60,000 hours at maximum RPM.
- D) Connecting Rods:** All TriTan plunger pumps are equipped with H-type connecting rods, with replaceable inserts.
- E) Crossheads:** High strength alloy castings, cross head and guides are Cylindrical for maximum bearing area and alignment, Crosshead pins are hardened and ground steel.
- F) Lubrication:** All power end parts are lubricated by splash system from oil in crankcase reservoir. Power frame has an oil return channel, from front of crossheads back to crankcase, to permit constant circulation of oil and to help keep oil cool.
- G) Pony Rods:** Pony rods are polished stainless steel, independent of crosshead and plunger.
- H) Pony Rod Seal:** Double acting lip seals around pony rod- prevents oil leakage from the inside and precludes contamination entering from the outside.
- I) Connecting Rod Bearings:** Similar to those in finest diesel Engine for shock resistance and long wear life.



McFarland – TriTan, LLC
 921 Seaco Court, Deer Park, TX 77536
 Tel :1-713-864-3366 | Fax : 1-713-864-3252
 Email: sales@tritanpump.com, www.tritanpump.com

921 Seaco Court, Deer Park, TX 77536, USA

Tel: 1-713-864-3366 / Fax: 1-713-864-3252

Email: sales@tritanpump.com

www.tritanpump.com

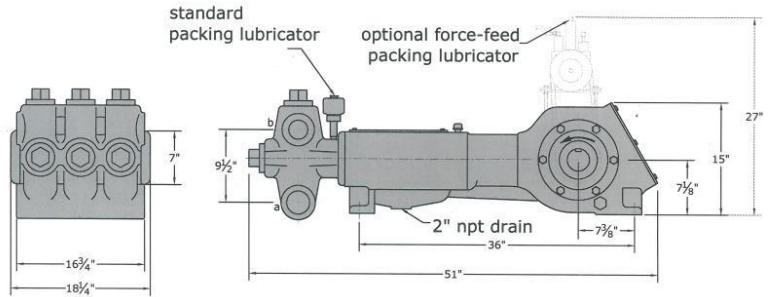
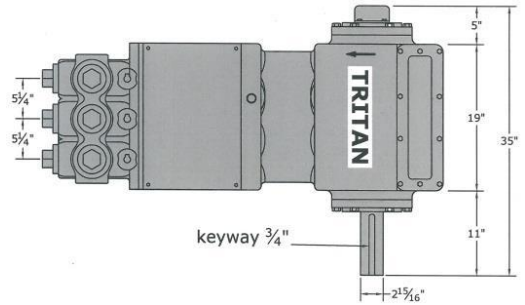
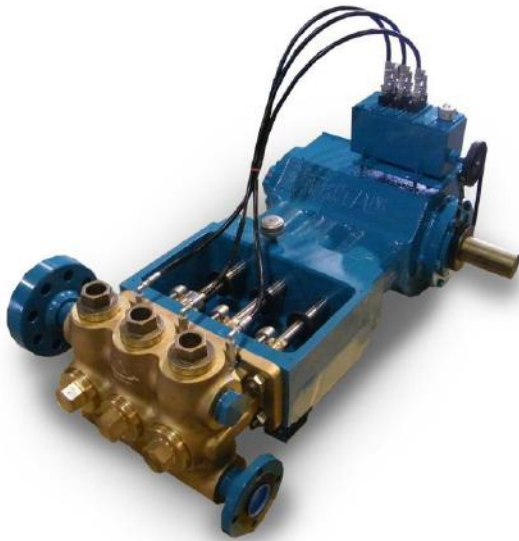


McFarland – TriTan, LLC
 The “High Pressure” Specialists!

Series 3140 AB/DI/SS

**API 674 Compliant
 Triplex Plunger Pump**

Pressure to 5,250 PSI | Flow to 207 GPM | Power to 200 HP



| DISPLACEMENT VOLUME (100% VOL.EFF.) | | | PUMP SPEED IN CRANKSHAFT REVOLUTIONS PER MINUTE | | | | | | | | |
|---|-----|-------|---|------------------------|------------------------|------------------------|--------------------|------------------------|------------------------|--------------------|--|
| | | | 1-3/8" 5,250 PSI | 1-1/2" 5,000 PSI | 1-5/8" 4,500 PSI | 1-3/4" 3,850 PSI | 2" 2,950 PSI | 2-1/4" 2,300 PSI | 2-1/2" 1,875 PSI | 3" 1,305 PSI | |
| GPM | BPH | BPD | | | | | | | | | |
| 18 | 26 | 618 | 207 | 174 | 149 | 128 | 98 | 77 | 63 | | |
| 23 | 33 | 790 | 265 | 223 | 190 | 164 | 125 | 99 | 80 | 56 | |
| 28 | 40 | 961 | 323 | 271 | 231 | 199 | 153 | 120 | 98 | 68 | |
| 33 | 47 | 1,133 | 380 | 319 | 272 | 235 | 180 | 142 | 115 | 80 | |
| 43 | 62 | 1,476 | 500 | 416 | 355 | 306 | 234 | 185 | 150 | 104 | |
| 52 | 74 | 1,785 | | 500 | 429 | 370 | 283 | 224 | 181 | 126 | |
| 61 | 87 | 2,094 | | | 500 | 434 | 332 | 262 | 213 | 148 | |
| 66 | 94 | 2,266 | | | | 469 | 359 | 274 | 230 | 160 | |
| 70 | 100 | 2,403 | | | | 500 | 381 | 301 | 244 | 169 | |
| 81 | 116 | 2,781 | | | | | 441 | 349 | 282 | 196 | |
| 92 | 132 | 3,158 | | | | | 500 | 396 | 321 | 223 | |
| 104 | 149 | 3,570 | | | | | | 448 | 362 | 252 | |
| 116 | 166 | 3,982 | | | | | | 500 | 404 | 281 | |
| 130 | 186 | 4,463 | | | | | | | 453 | 315 | |
| 143 | 205 | 4,909 | | | | | | | 500 | 346 | |
| 175 | 250 | 6,007 | | | | | | | | 424 | |
| 207 | 296 | 7,106 | | | | | | | | 500 | |
| GPM FACTOR | | | 0.0868 | 0.1033 | 0.1212 | 0.1406 | 0.1836 | 0.2324 | 0.2869 | 0.4131 | |
| BPH FACTOR | | | 0.1240 | 0.1480 | 0.1740 | 0.2000 | 0.2640 | 0.3320 | 0.4100 | 0.5920 | |
| 500 Max RPM BHP=(GPM XPSI) / 1543 All figures based on 100% volumetric efficiency | | | | | | | | | | | |

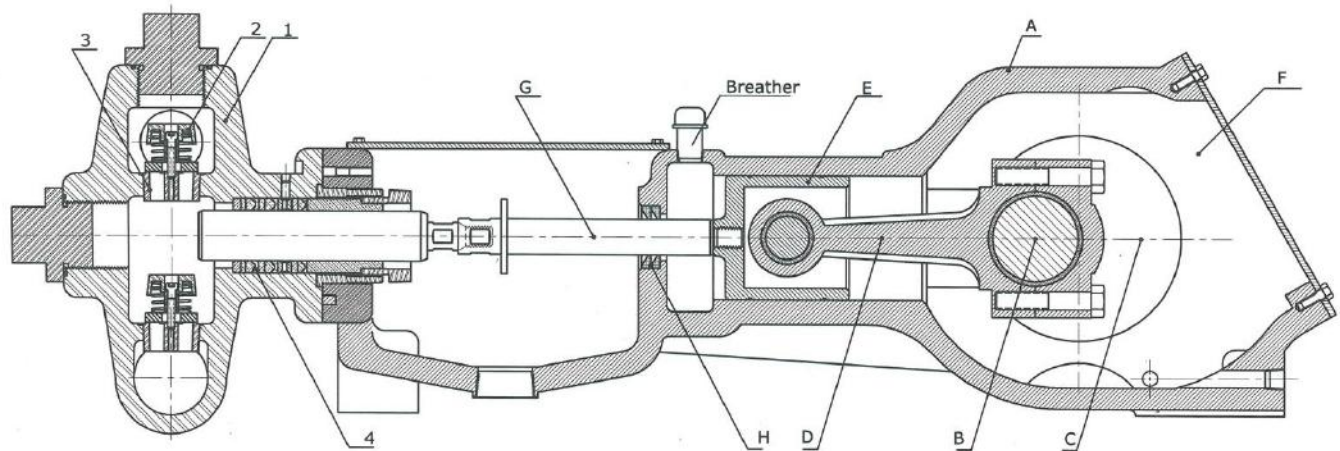
921 Seaco Court, Deer Park, TX 77536, USA

Tel: 1-713-864-3366 / Fax: 1-713-864-3252

Email: sales@tritanpump.com

www.tritanpump.com

Series 3140 AB/DI/SS



SPECIFICATIONS

- * Number of Plungers 3
- * Stroke Length: 4-1/2" (114 mm)
- * Plunger Load 9940 lbs
- * Pump Weight 1250 lbs
- * Oil Capacity 3.5 U.S gallons
- * Suction Connection 2-1/2" NPT
- * Discharge Connection 2"

FLUID END

- 1) Fluid End Body:** One piece cast ductile iron or Aluminum Bronze.
 - 2) Valves:** A- Stainless Abrasion Resistant Valves*
B- Stainless Ball valves*
- *Exotic Materials available upon request
- 3) Tapered seated valve decks.**
 - 4) Plungers:** Plunger materials available are: 17-4PH (standard), colmony coated stainless steel, ceramic, and tungsten carbide.

Services:

- * Crude Oil
- * Fresh Water
- * Salt Water
- * Corrosive Fluids

POWER END

- A) Power Frame:** High strength ductile iron alloy casting with heavy wall sections well ribbed to insure rigid construction, totally enclosed with sealed access cover
- B) Crankshaft:** Ductile iron for inherent shock load damping, mounted with center line of shaft on center line of cross-head. Crankshafts may extend from either side.
- C) Crankshaft Bearings:** Interchangeable heavy duty roller bearing. Minimum L-10 rated life of 60,000 hours at maximum RPM.
- D) Connecting Rods:** All TriTan plunger pumps are equipped with H-type connecting rods, with replaceable inserts.
- E) Crossheads:** High strength alloy castings, cross head and guides are Cylindrical for maximum bearing area and alignment, Crosshead pins are hardened and ground steel.
- F) Lubrication:** All power end parts are lubricated by splash system from oil in crankcase reservoir. Power frame has an oil return channel, from front of crossheads back to crankcase, to permit constant circulation of oil and to help keep oil cool.
- G) Pony Rods:** Pony rods are polished stainless steel, independent-not part of crosshead or plunger.
- H) Pony Rod Seals:** Double acting lip seals around pony rod-prevents oil leakage from the inside and precludes contamination entering from the outside.



McFarland – TriTan, LLC
921 Seaco Court, Deer Park, TX 77536
Tel : 1-713-864-3366 | Fax : 1-713-864-3252
Email: sales@tritanpump.com, www.tritanpump.com

921 Seaco Court, Deer Park, TX 77536, USA

Tel: 1-713-864-3366 / Fax: 1-713-864-3252

Email: sales@tritanpump.com

www.tritanpump.com

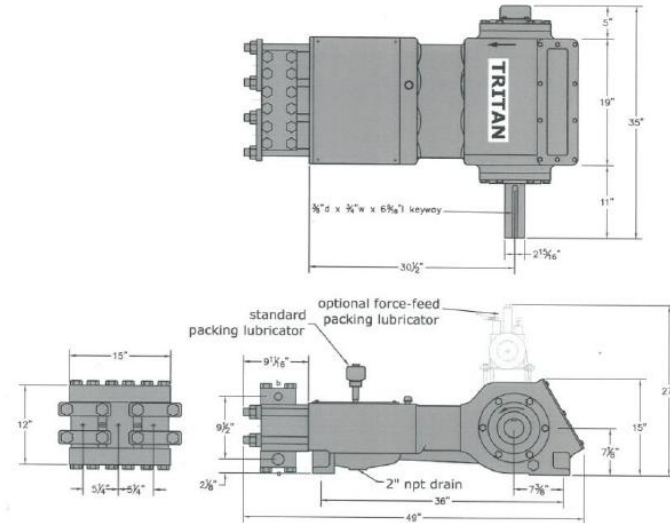
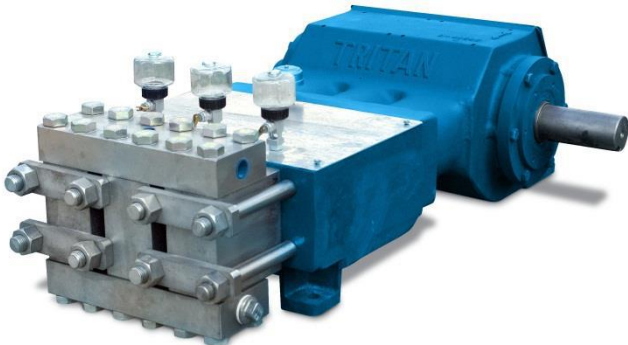


McFarland – TriTan, LLC
 The “High Pressure” Specialists!

Series 3140 SX

**API 674 Compliant
 Triplex Plunger Pump**

Pressure to 40,000 PSI | Flow to 44 GPM | Power to 200 HP



| DISPLACEMENT VOLUME (100% VOL.EFF.) GPM BPH BPD | | | PUMP SPEED IN CRANKSHAFT REVOLUTIONS PER MINUTE | | | | | | | | |
|---|----|-------|---|-----------------------|-----------------------|-----------------------|---------------------|-------------------------|------------------------|------------------------|--|
| | | | 3/8" 40,000 PSI | 5/8" 30,000 PSI | 3/4" 22,000 PSI | 7/8" 16,530 PSI | 1" 12,655 PSI | 1-1/8" 10,000 PSI | 1-1/4" 8,100 PSI | 1-3/8" 6,695 PSI | |
| 1 | 1 | 34 | 154 | 56 | | | | | | | |
| 2 | 3 | 69 | 308 | 112 | 78 | 57 | | | | | |
| 3 | 4 | 103 | 462 | 168 | 116 | 85 | | | | | |
| 4 | 6 | 137 | | 223 | 155 | 114 | 87 | 69 | 56 | | |
| 6 | 9 | 205 | | 335 | 233 | 171 | 131 | 103 | 84 | 69 | |
| 8 | 11 | 274 | | 447 | 310 | 228 | 174 | 138 | 112 | 92 | |
| 10 | 14 | 342 | | | 388 | 285 | 218 | 172 | 139 | 115 | |
| 12 | 17 | 411 | | | 415 | 342 | 261 | 207 | 167 | 138 | |
| 14 | 20 | 479 | | | | 399 | 305 | 241 | 195 | 161 | |
| 16 | 23 | 549 | | | | 456 | 349 | 275 | 223 | 184 | |
| 18 | 26 | 616 | | | | | 392 | 310 | 251 | 207 | |
| 20 | 28 | 684 | | | | | 436 | 344 | 279 | 230 | |
| 22 | 31 | 754 | | | | | 479 | 379 | 307 | 253 | |
| 24 | 34 | 821 | | | | | | 413 | 335 | 276 | |
| 26 | 37 | 893 | | | | | | 448 | 363 | 300 | |
| 28 | 40 | 961 | | | | | | 482 | 391 | 323 | |
| 30 | 43 | 1,030 | | | | | | | 418 | 346 | |
| 32 | 46 | 1,098 | | | | | | | 446 | 369 | |
| 34 | 49 | 1,167 | | | | | | | 474 | 392 | |
| 36 | 51 | 1,234 | | | | | | | 502 | 415 | |
| 38 | 54 | 1,303 | | | | | | | | 438 | |
| 40 | 57 | 1,372 | | | | | | | | 461 | |
| 42 | 60 | 1,440 | | | | | | | | 484 | |
| 44 | 63 | 1,509 | | | | | | | | 507 | |
| GPM FACTOR | | | 0.0065 | 0.0176 | 0.0258 | 0.0351 | 0.0459 | 0.0581 | 0.0717 | 0.0868 | |
| BPH FACTOR | | | 0.0093 | 0.0259 | 0.0369 | 0.0502 | 0.0656 | 0.0830 | 0.1025 | 0.1240 | |

500 Max RPM BHP= (GPM X PSI) / 1543
 All figures based on 100% volumetric efficiency

Applications:

- * Hydrostatic Testing
- * Water Blasting/
 Jetting
- * Chemical Injection
- * Concrete Demolition
- * Water Disposal

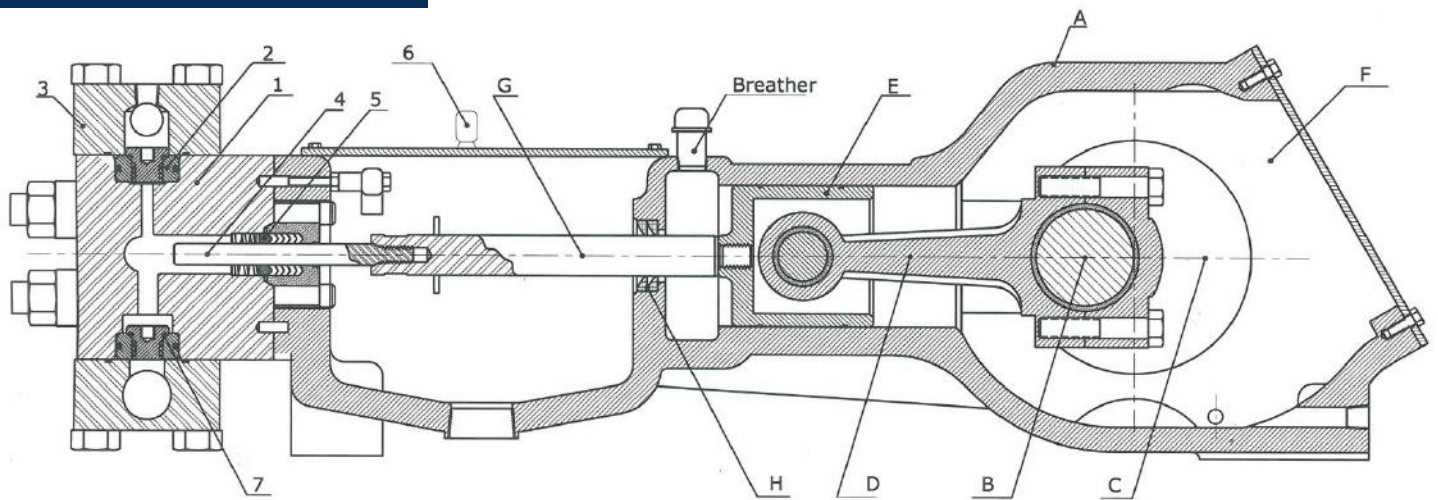
921 Seaco Court, Deer Park, TX 77536, USA

Tel: 1-713-864-3366 / Fax: 1-713-864-3252

Email: sales@tritanpump.com

www.tritanpump.com

Series 3140 SX



SPECIFICATIONS

- * Number of Plungers 3
- * Stroke Length: 4-1/2" (114 mm)
- * Plunger Load 9940 lbs
- * Pump Weight 1455 lbs
- * Oil Capacity 3.5 U.S gallons
- * Suction Connection 1-1/2" NPT
- * Discharge Connection 1" NPT or Autoclave

FLUID END

- 1) Fluid End Body:** Stainless steel alloys for high pressure applications with generous radii at intersecting bores reduces stress points that can cause fluid block cracks. Smooth flow body design reduces flow velocity, turbulence and pulsation-virtually eliminates cavitation.
- 2) Valves:** . All stainless steel fluid end pumps are furnished with cone seat internal spring non-tapered seat style valves. All valves are vertical eliminating valve guide friction drag found in horizontal valves.
- 3) Valve Covers:** Stainless steel fluid end with bolts- on valve covers to prevent galling.
- 4) Plungers:** Plunger materials available are: 17-4PH (standard), colmonoy coated stainless steel, and ceramic.
- 5) Packing:** Chevron "V" ring style high pressure plunger packing is furnished in all pumps, changed in minutes without fluid block removal.
- 6) Plunger Lubrication:** Water packing lubrication is standard for all stainless steel high pressure pumps. Grease, Oil drip, and forced feed lubrication are furnished as designated.
- 7) Metal to metal valve seating:** Precision metal to metal, plus O-Ring to metal, valve seating result in 98% volumetric efficiency –reduces horsepower requirements.

POWER END

- A) Power Frame:** High strength ductile iron alloy casting with heavy wall sections well ribbed to insure rigid construction, totally enclosed with sealed access cover
- B) Crankshaft:** Ductile iron for inherent shock load damping, mounted with center line of shaft on center line of cross-head. Crankshafts may extend from either side.
- C) Crankshaft Bearings:** Interchangeable heavy duty roller bearing. Minimum L-10 rated life of 60,000 hours at maximum RPM.
- D) Connecting Rods:** All TriTan plunger pumps are equipped with H-type connecting rods, with replaceable inserts.
- E) Crossheads:** High strength alloy castings, cross head and guides are Cylindrical for maximum bearing area and alignment, Crosshead pins are hardened and ground steel.
- F) Lubrication:** All power end parts are lubricated by splash system from oil in crankcase reservoir. Power frame has an oil return channel, from front of crossheads back to crankcase, to permit constant circulation of oil and to help keep oil cool.
- G) Pony Rods:** Pony rods are polished stainless steel, independent of crosshead and plunger.
- H) Pony Rods Seals:** Double acting lip seals around pony rod-prevents oil leakage from the inside and precludes contamination entering from the outside.



McFarland – TriTan, LLC
921 Seaco Court, Deer Park, TX 77536
Tel :1-713-864-3366 | Fax : 1-713-864-3252
Email: sales@tritanpump.com, www.tritanpump.com

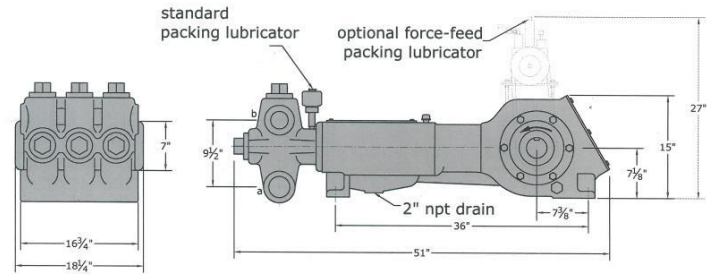
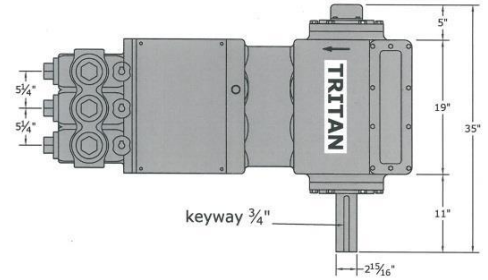


McFarland – TriTan, LLC
 The “High Pressure” Specialists!

Series 3150 AB/DI/SS

**API 674 Compliant
 Triplex Plunger Pump**

Pressure to 5,500 PSI | Flow to 160 GPM | Power to 150 HP



| DISPLACEMENT VOLUME (100% VOL.EFF.) | | | PUMP SPEED IN CRANKSHAFT REVOLUTIONS PER MINUTE | | | | | | | | | | | |
|-------------------------------------|-----|-------|---|------------------------|------------------------|------------------------|------------------------|-----------------------|------------------------|------------------------|--------------------|--|--|--|
| | | | 1-1/4" 5,500 PSI | 1-3/8" 5,250 PSI | 1-1/2" 5,000 PSI | 1-5/8" 4,795 PSI | 1-3/4" 4,135 PSI | 2" 3,165 PSI | 2-1/4" 2,500 PSI | 2-1/2" 2,025 PSI | 3" 1,305 PSI | | | |
| GPM | BPH | BPD | | | | | | | | | | | | |
| 5 | 7 | 168 | 90 | 74 | 62 | 53 | | | | | | | | |
| 10 | 14 | 336 | 179 | 148 | 125 | 106 | 91 | 70 | 55 | | | | | |
| 15 | 21 | 504 | 269 | 222 | 187 | 159 | 137 | 105 | 83 | 67 | | | | |
| 20 | 29 | 696 | 358 | 296 | 249 | 212 | 183 | 140 | 111 | 90 | 63 | | | |
| 25 | 36 | 864 | 448 | 370 | 311 | 265 | 229 | 175 | 138 | 112 | 78 | | | |
| 30 | 43 | 1,032 | | 444 | 374 | 318 | 274 | 210 | 166 | 134 | 94 | | | |
| 35 | 50 | 1,200 | | | 436 | 371 | 320 | 245 | 194 | 157 | 109 | | | |
| 40 | 57 | 1,368 | | | 498 | 424 | 366 | 280 | 221 | 179 | 125 | | | |
| 45 | 64 | 1,536 | | | | 477 | 412 | 315 | 249 | 202 | 141 | | | |
| 50 | 71 | 1,704 | | | | | 457 | 350 | 277 | 224 | 156 | | | |
| 55 | 79 | 1,896 | | | | | 503 | 385 | 304 | 247 | 172 | | | |
| 60 | 86 | 2,064 | | | | | | 420 | 332 | 269 | 188 | | | |
| 65 | 93 | 2,232 | | | | | | 455 | 360 | 291 | 203 | | | |
| 70 | 100 | 2,400 | | | | | | 490 | 387 | 314 | 219 | | | |
| 75 | 107 | 2,568 | | | | | | | 415 | 336 | 234 | | | |
| 80 | 114 | 2,736 | | | | | | | 443 | 359 | 250 | | | |
| 85 | 121 | 2,904 | | | | | | | 470 | 381 | 266 | | | |
| 90 | 129 | 3,096 | | | | | | | 498 | 403 | 281 | | | |
| 95 | 136 | 3,264 | | | | | | | | 425 | 297 | | | |
| 110 | 157 | 3,768 | | | | | | | | 493 | 344 | | | |
| 135 | 193 | 4,632 | | | | | | | | | 422 | | | |
| 160 | 228 | 5,472 | | | | | | | | | 500 | | | |
| GPM FACTOR | | | 0.0558 | 0.0657 | 0.0803 | 0.0943 | 0.1093 | 0.1428 | 0.1807 | 0.2231 | 0.3213 | | | |
| BPH FACTOR | | | 0.0797 | 0.0964 | 0.1147 | 0.1347 | 0.1562 | 0.2040 | 0.2582 | 0.3187 | 0.4563 | | | |
| | | | 500 Max RPM | | | | | BHP=(GPM XPSI) / 1543 | | | | | | |
| | | | All figures based on 100% volumetric efficiency | | | | | | | | | | | |

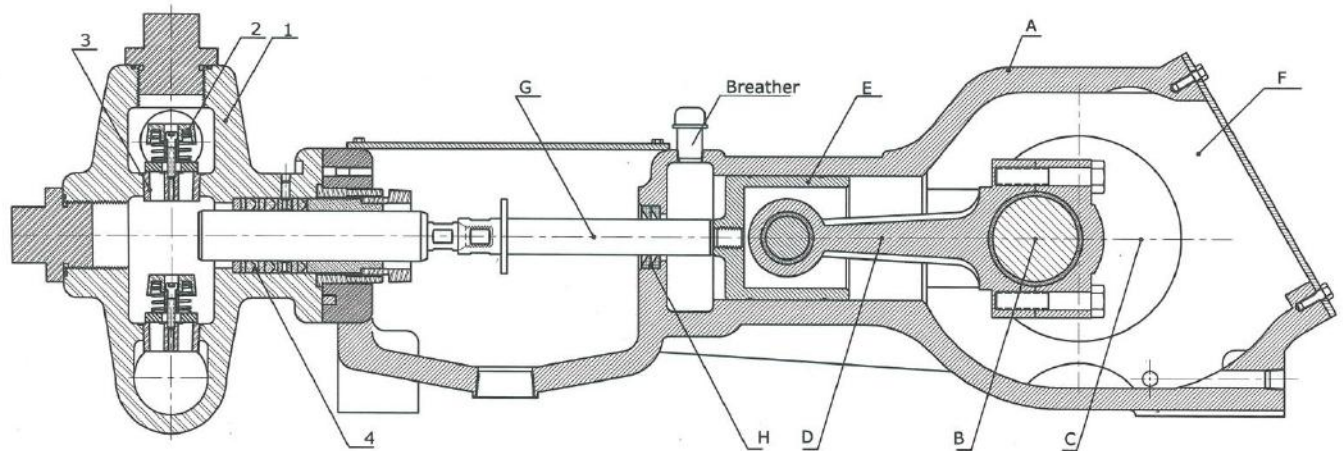
921 Seaco Court, Deer Park, TX 77536, USA

Tel: 1-713-864-3366 / Fax: 1-713-864-3252

Email: sales@tritanpump.com

www.tritanpump.com

Series 3150 AB/DI/SS



SPECIFICATIONS

- * Number of Plungers 3
- * Stroke Length: 3-1/2" (89 mm)
- * Plunger Load 9940 lbs
- * Pump Weight 1250 lbs
- * Oil Capacity 3.5 U.S gallons
- * Suction Connection 2-1/2" NPT
- * Discharge Connection 2"

FLUID END

- 1) Fluid End Body:** One piece cast ductile iron or Aluminum Bronze.
- 2) Valves:**
 - A- CELCON Valve-Bronze seat or
 - B- CELCON Valve- stainless steel seat.
 - C- Hardened stainless steel valve & seat.
- 3) Tapered seated valve decks.**
- 4) Plungers:** Plunger materials available are: 17-4PH, colmonoy coated stainless steel, ceramic, and tungsten carbide.

Services:

- * **Crude Oil**
- * **Fresh Water**
- * **Salt Water**
- * **Corrosive Fluids**

POWER END

- A) Power Frame:** High strength ductile iron alloy casting with heavy wall sections well ribbed to insure rigid construction, totally enclosed with sealed access cover
- B) Crankshaft:** Ductile iron for inherent shock load damping, mounted with center line of shaft on center line of cross-head. Crankshafts may extend from either side.
- C) Crankshaft Bearings:** Interchangeable heavy duty roller bearing. Minimum L-10 rated life of 60,000 hours at maximum RPM.
- D) Connecting Rods:** All TriTan plunger pumps are equipped with H-type connecting rods, with replaceable inserts.
- E) Crossheads:** High strength alloy castings, cross head and guides are Cylindrical for maximum bearing area and alignment, Crosshead pins are hardened and ground steel.
- F) Lubrication:** All power end parts are lubricated by splash system from oil in crankcase reservoir. Power frame has an oil return channel, from front of crossheads back to crankcase, to permit constant circulation of oil and to help keep oil cool.
- G) Pony Rods:** Pony rods are polished stainless steel, independent of crosshead and plunger.
- H) Pony Rod Seals:** Double acting lip seals around pony rod-prevents oil leakage from the inside and precludes contamination entering from the outside.



McFarland – TriTan, LLC
921 Seaco Court, Deer Park, TX 77536
Tel :1-713-864-3366 | Fax : 1-713-864-3252
Email: sales@tritanpump.com, www.tritanpump.com

921 Seaco Court, Deer Park, TX 77536, USA

Tel: 1-713-864-3366 / Fax: 1-713-864-3252

Email: sales@tritanpump.com

www.tritanpump.com

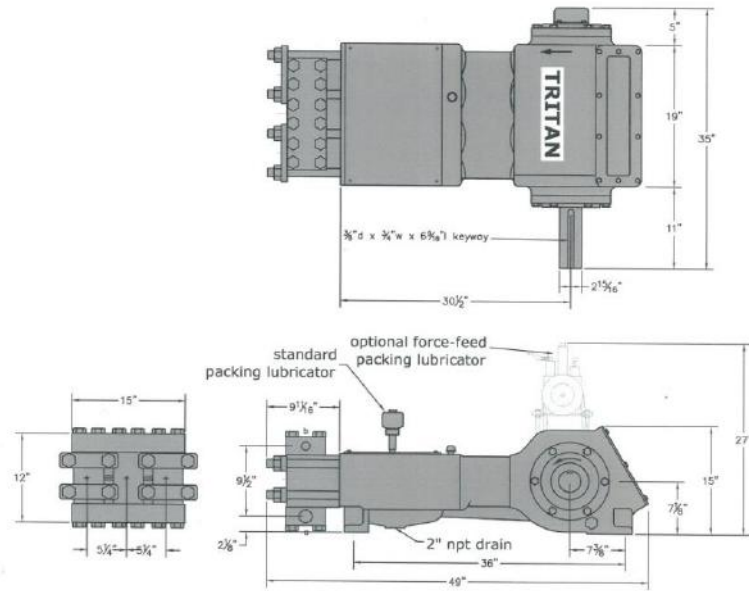


McFarland – TriTan, LLC
 The “High Pressure” Specialists!

Series 3150 SX

**API 674 Compliant
 Triplex Plunger Pump**

Pressure to 40,000 PSI | Flow to 34 GPM | Power to 150 HP



| DISPLACEMENT VOLUME (100% VOL.EFF.) GPM BPH BPD | | | PUMP SPEED IN CRANKSHAFT REVOLUTIONS PER MINUTE | | | | | | | | |
|---|-----|-------|---|-----------------------|-----------------------|-----------------------|---------------------|-------------------------|------------------------|------------------------|--|
| | | | 3/8" 40,000 PSI | 5/8" 30,000 PSI | 3/4" 22,000 PSI | 7/8" 16,530 PSI | 1" 12,655 PSI | 1-1/8" 10,000 PSI | 1-1/4" 8,100 PSI | 1-3/8" 6,695 PSI | |
| 0.6 | 0.9 | 21 | 118 | | | | | | | | |
| 0.8 | 1.2 | 28 | 157 | 57 | | | | | | | |
| 1 | 1.4 | 35 | 196 | 72 | 50 | | | | | | |
| 2 | 3 | 72 | 392 | 144 | 100 | 73 | 56 | | | | |
| 4 | 6 | 144 | | 288 | 199 | 147 | 112 | 88 | 72 | 59 | |
| 6 | 9 | 216 | | 432 | 299 | 220 | 168 | 133 | 108 | 89 | |
| 8 | 11 | 274 | | | 398 | 293 | 224 | 177 | 143 | 119 | |
| 10 | 14 | 336 | | | 498 | 366 | 280 | 221 | 179 | 148 | |
| 12 | 17 | 408 | | | | 440 | 336 | 265 | 215 | 178 | |
| 14 | 20 | 480 | | | | 512 | 392 | 310 | 251 | 207 | |
| 16 | 23 | 552 | | | | | 448 | 354 | 287 | 237 | |
| 18 | 26 | 624 | | | | | 504 | 398 | 323 | 267 | |
| 20 | 29 | 696 | | | | | | 442 | 358 | 296 | |
| 22 | 32 | 768 | | | | | | 487 | 394 | 326 | |
| 24 | 34 | 816 | | | | | | | 430 | 356 | |
| 26 | 37 | 886 | | | | | | | 466 | 385 | |
| 28 | 40 | 960 | | | | | | | 502 | 415 | |
| 30 | 43 | 1,032 | | | | | | | | 444 | |
| 32 | 46 | 1,104 | | | | | | | | 474 | |
| 34 | 49 | 1,176 | | | | | | | | 504 | |
| GPM FACTOR | | | 0.0051 | 0.0139 | 0.2001 | 0.0273 | 0.0357 | 0.0452 | 0.0558 | 0.0675 | |
| BPH FACTOR | | | 0.0072 | 0.0199 | 0.0287 | 0.0390 | 0.0510 | 0.0646 | 0.0797 | 0.0964 | |
| 500 Max RPM BHP=(GPM XPSI) / 1543 All figures based on 100% volumetric efficiency | | | | | | | | | | | |

Applications:

- * Hydrostatic Testing
- * Water Blasting/
 Jetting
- * Chemical Injection
- * Concrete Demolition
- * Water Disposal

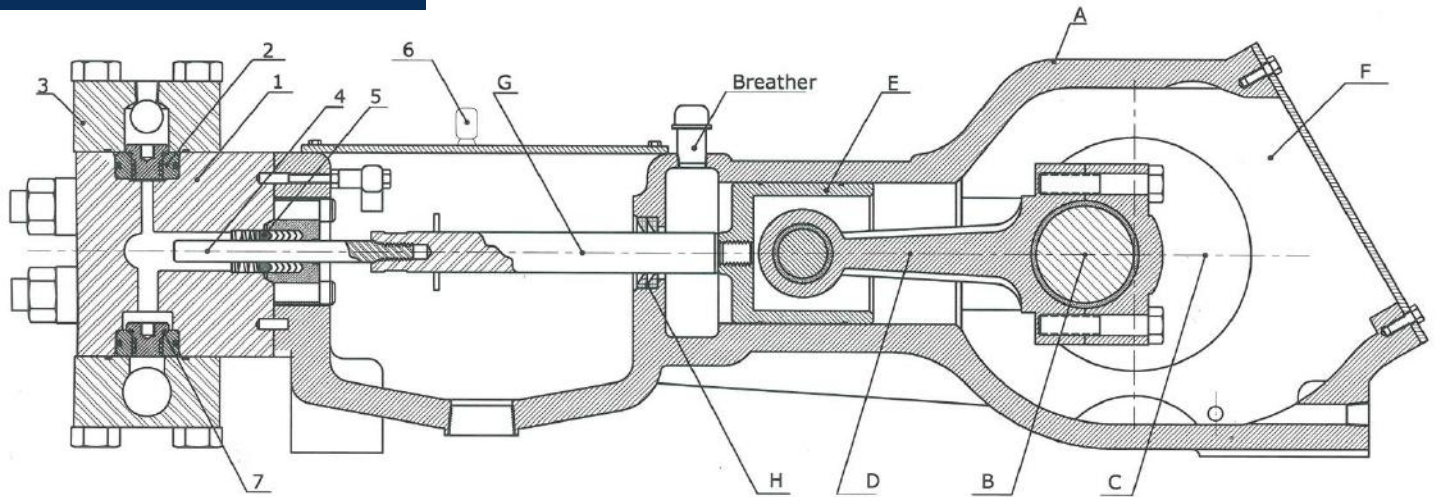
921 Seaco Court, Deer Park, TX 77536, USA

Tel: 1-713-864-3366 / Fax: 1-713-864-3252

Email: sales@tritanpump.com

www.tritanpump.com

Series 3150 SX



SPECIFICATIONS

- * Number of Plungers 3
- * Stroke Length: 3-1/2" (89 mm)
- * Plunger Load 9940 lbs
- * Pump Weight 1455 lbs
- * Oil Capacity 3.5 U.S gallons
- * Suction Connection 1-1/2" NPT
- * Discharge Connection 1" NPT or Autoclave

FLUID END

- 1) Fluid End Body:** Stainless steel alloys for high pressure applications with generous radii at intersecting bores reduces stress points that can cause fluid block cracks. Smooth flow body design reduces flow velocity, turbulence and pulsation-virtually eliminates cavitation.
- 2) Valves:** . All stainless steel fluid end pumps are furnished with cone seat internal spring non-tapered seat style valves. All valves are vertical eliminating valve guide friction drag found in horizontal valves.
- 3) Valve Covers:** Stainless steel fluid end with bolts- on valve covers to prevent galling.
- 4) Plungers:** Plunger materials available are: 17-4PH (standard), colmonoy coated stainless steel, and ceramic.
- 5) Packing:** Chevron "V" ring style high pressure plunger packing is furnished in all pumps, changed in minutes without fluid block removal.
- 6) Plunger Lubrication:** Water packing lubrication is standard for all stainless steel high pressure pumps. Grease, Oil drip, and forced feed lubrication are furnished as designated.
- 7) Metal to metal valve seating:** Precision metal to metal, plus O-Ring to metal, valve seating result in 98% volumetric efficiency –reduces horsepower requirements.

POWER END

- A) Power Frame:** High strength ductile iron alloy casting with heavy wall sections well ribbed to insure rigid construction, totally enclosed with sealed access cover
- B) Crankshaft:** Ductile iron for inherent shock load damping, mounted with center line of shaft on center line of cross-head. Crankshafts may extend from either side.
- C) Crankshaft Bearings:** Interchangeable heavy duty roller bearing. Minimum L-10 rated life of 60,000 hours at maximum RPM.
- D) Connecting Rods:** All TriTan plunger pumps are equipped with H-type connecting rods, with replaceable inserts.
- E) Crossheads:** High strength alloy castings, cross head and guides are Cylindrical for maximum bearing area and alignment, Crosshead pins are hardened and ground steel.
- F) Lubrication:** All power end parts are lubricated by splash system from oil in crankcase reservoir. Power frame has an oil return channel, from front of crossheads back to crankcase, to permit constant circulation of oil and to help keep oil cool.
- G) Pony Rods:** Pony rods are polished stainless steel, independent of crosshead and plunger.
- H) Pony Rods Seals:** Double acting lip seals around pony rod-prevents oil leakage from the inside and precludes contamination entering from the outside.



McFarland – TriTan, LLC
921 Seaco Court, Deer Park, TX 77536
Tel : 1-713-864-3366 | Fax : 1-713-864-3252
Email: sales@tritanpump.com, www.tritanpump.com

921 Seaco Court, Deer Park, TX 77536, USA

Tel: 1-713-864-3366 / Fax: 1-713-864-3252

Email: sales@tritanpump.com

www.tritanpump.com

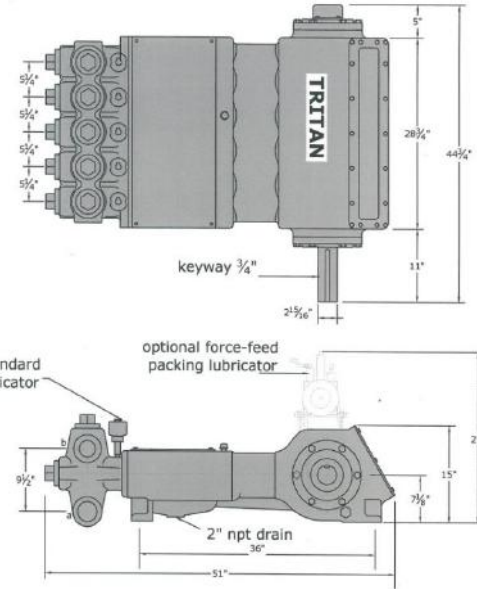
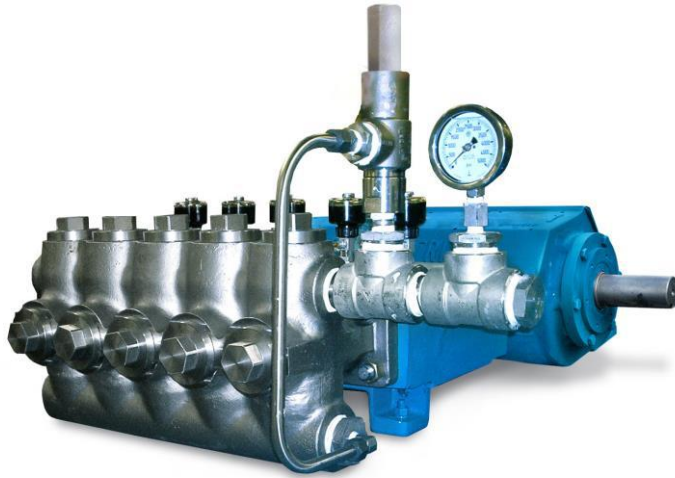


McFarland – TriTan, LLC
 The “High Pressure” Specialists!

Series 5200 AB/DI/SS

**API 674 Compliant
 Quintuplex Plunger Pump**

Pressure to 5,500 PSI | Flow to 267 GPM | Power to 250 HP



| DISPLACEMENT VOLUME (100% VOL.EFF.) | | | PUMP SPEED IN CRANKSHAFT REVOLUTIONS PER MINUTE | | | | | | | | | | | |
|---|-----|-------|---|------------------------|------------------------|------------------------|------------------------|--------------------|------------------------|------------------------|--------------------|--|--|--|
| | | | 1-1/4" 5,500 PSI | 1-3/8" 5,250 PSI | 1-1/2" 5,000 PSI | 1-5/8" 4,795 PSI | 1-3/4" 4,135 PSI | 2" 3,165 PSI | 2-1/4" 2,500 PSI | 2-1/2" 2,025 PSI | 3" 1,305 PSI | | | |
| GPM | BPH | BPD | | | | | | | | | | | | |
| 5 | 7 | 168 | 54 | | | | | | | | | | | |
| 10 | 14 | 336 | 108 | 89 | 75 | 64 | 55 | | | | | | | |
| 15 | 21 | 504 | 161 | 133 | 112 | 95 | 82 | 63 | 50 | | | | | |
| 20 | 29 | 672 | 215 | 178 | 149 | 127 | 110 | 84 | 66 | 54 | | | | |
| 25 | 36 | 840 | 269 | 222 | 187 | 159 | 137 | 105 | 83 | 67 | | | | |
| 30 | 43 | 1,032 | 323 | 267 | 224 | 191 | 165 | 126 | 100 | 81 | 56 | | | |
| 35 | 50 | 1,200 | 376 | 311 | 261 | 223 | 192 | 147 | 116 | 94 | 65 | | | |
| 40 | 57 | 1,368 | 430 | 356 | 299 | 255 | 220 | 168 | 133 | 108 | 75 | | | |
| 45 | 64 | 1,536 | 483 | 400 | 336 | 286 | 247 | 189 | 149 | 121 | 84 | | | |
| 50 | 71 | 1,704 | | 444 | 373 | 318 | 274 | 210 | 166 | 134 | 94 | | | |
| 60 | 86 | 2,040 | | | 448 | 382 | 329 | 252 | 199 | 161 | 112 | | | |
| 70 | 100 | 2,400 | | | | 446 | 384 | 294 | 232 | 188 | 131 | | | |
| 80 | 114 | 2,736 | | | | 509 | 439 | 336 | 266 | 215 | 150 | | | |
| 90 | 129 | 3,072 | | | | | 494 | 378 | 299 | 242 | 169 | | | |
| 100 | 143 | 3,430 | | | | | | 420 | 332 | 269 | 188 | | | |
| 115 | 164 | 3,935 | | | | | | 483 | 382 | 309 | 216 | | | |
| 130 | 186 | 4,440 | | | | | | | 432 | 350 | 244 | | | |
| 145 | 207 | 4,970 | | | | | | | 481 | 390 | 272 | | | |
| 160 | 229 | 5,508 | | | | | | | | 430 | 300 | | | |
| 185 | 265 | 6,360 | | | | | | | | 497 | 347 | | | |
| 240 | 343 | 8,229 | | | | | | | | | 450 | | | |
| 267 | 381 | 9,180 | | | | | | | | | 500 | | | |
| GPM FACTOR | | | 0.0930 | 0.1125 | 0.1339 | 0.1571 | 0.1822 | 0.2380 | 0.3012 | 0.3719 | 0.5355 | | | |
| BPH FACTOR | | | 0.1329 | 0.1607 | 0.1913 | 0.2244 | 0.2603 | 0.3400 | 0.4303 | 0.5313 | 0.7650 | | | |
| 500 Max RPM BHP=(GPM XPSI) / 1543 All figures based on 100% volumetric efficiency | | | | | | | | | | | | | | |

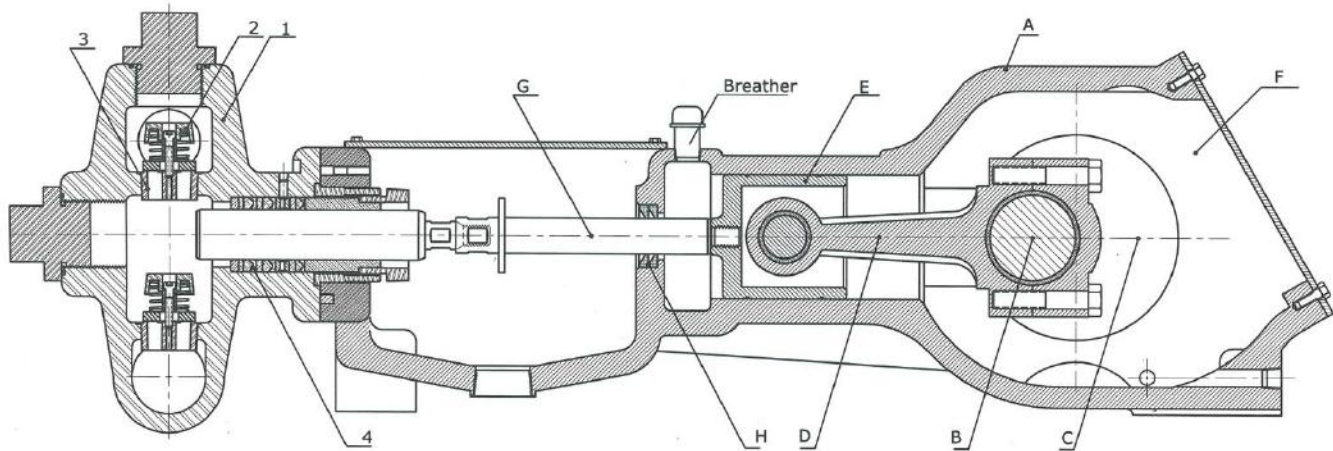
921 Seaco Court, Deer Park, TX 77536, USA

Tel: 1-713-864-3366 / Fax: 1-713-864-3252

Email: sales@tritanpump.com

www.tritanpump.com

Series 5200 AB/DI/SS



SPECIFICATIONS

* Number of Plungers 5 * Stroke Length: 3-1/2" (89 mm) * Plunger Load 9940 lbs * Pump Weight 1875 lbs
* Oil Capacity 5.5 U.S gallons * Suction Connection 2-1/2" NPT * Discharge Connection 2"

FLUID END

- 1) Fluid End Body:** One piece cast ductile iron or Aluminum Bronze.
- 2) Valves:** A- CELCON Valve-Bronze seat or
B- CELCON Valve- stainless steel seat.
C- Hardened stainless steel valve & seat
- 3) Tapered seated valve decks.**
- 4) Plungers:** Plunger materials available are:
17-4PH (standard), colmonoy coated stainless steel,
ceramic, and tungsten carbide.

Services:

- * Crude Oil
- * Fresh Water
- * Salt Water
- * Corrosive Fluids

POWER END

- A) Power Frame:** High strength ductile iron alloy casting with heavy wall sections well ribbed to insure rigid construction, totally enclosed with sealed access cover
- B) Crankshaft:** Ductile iron for inherent shock load damping, mounted with center line of shaft on center line of cross-head. Crankshafts may extend from either side.
- C) Crankshaft Bearings:** Interchangeable heavy duty roller bearing. Minimum L-10 rated life of 60,000 hours at maximum RPM.
- D) Connecting Rods:** All TriTan plunger pumps are equipped with H-type connecting rods, with replaceable inserts.
- E) Crossheads:** High strength alloy castings, cross head and guides are Cylindrical for maximum bearing area and alignment, Crosshead pins are hardened and ground steel.
- F) Lubrication:** All power end parts are lubricated by splash system from oil in crankcase reservoir. Power frame has an oil return channel, from front of crossheads back to crankcase, to permit constant circulation of oil and to help keep oil cool.
- G) Pony Rods:** Pony rods are polished stainless steel, independent of crosshead and plunger.
- H) Pony Rod Seal:** Double acting lip seals around pony rod-prevents oil leakage from the inside and precludes contamination entering from the outside.



McFarland – TriTan, LLC
921 Seaco Court, Deer Park, TX 77536
Tel :1-713-864-3366 | Fax : 1-713-864-3252
Email: sales@tritanpump.com, www.tritanpump.com

921 Seaco Court, Deer Park, TX 77536, USA

Tel: 1-713-864-3366 / Fax: 1-713-864-3252 Email: sales@tritanpump.com

www.tritanpump.com

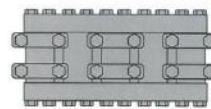
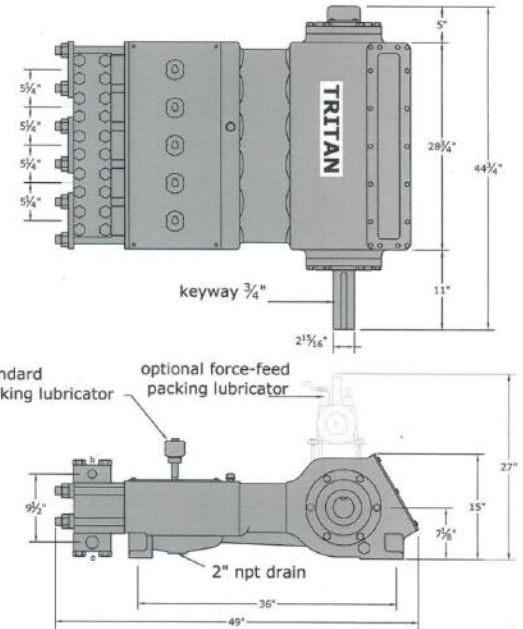
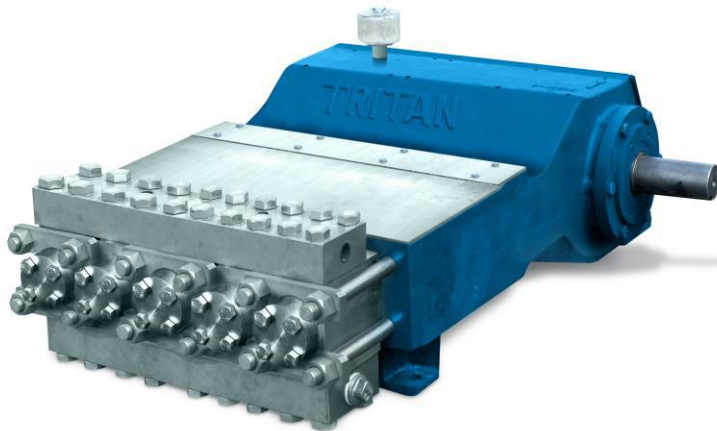


McFarland – TriTan, LLC
 The “High Pressure” Specialists!

Series 5200 SX

**API 674 Compliant
 Quintuplex Plunger Pump**

Pressure to 40,000 PSI | Flow to 56 GPM | Power to 250 HP



| DISPLACEMENT VOLUME (100% VOL.EFF.) | | | PUMP SPEED IN CRANKSHAFT REVOLUTIONS PER MINUTE | | | | | | | |
|--|-----|-------|---|-----------------------|-----------------------|-----------------------|---------------------|-------------------------|------------------------|------------------------|
| | | | 3/8" 40,000 PSI | 5/8" 30,000 PSI | 3/4" 22,000 PSI | 7/8" 16,530 PSI | 1" 12,655 PSI | 1-1/8" 10,000 PSI | 1-1/4" 8,100 PSI | 1-3/8" 6,695 PSI |
| GPM | BPH | BPD | | | | | | | | |
| 0.5 | 0.7 | 17 | 59 | | | | | | | |
| 1 | 1.4 | 34 | 118 | | | | | | | |
| 2 | 3 | 68 | 235 | 86 | | | | | | |
| 3 | 4 | 102 | 353 | 129 | 89 | | | | | |
| 4 | 6 | 144 | 471 | 172 | 119 | 88 | 67 | 53 | | |
| 6 | 8 | 192 | | 259 | 179 | 131 | 101 | 80 | | |
| 8 | 11 | 264 | | 345 | 239 | 176 | 134 | 106 | 86 | 71 |
| 12 | 17 | 408 | | | 358 | 264 | 202 | 159 | 129 | 107 |
| 16 | 23 | 552 | | | 478 | 352 | 269 | 212 | 172 | 142 |
| 20 | 29 | 696 | | | | 439 | 336 | 266 | 215 | 178 |
| 24 | 34 | 816 | | | | | 403 | 319 | 258 | 213 |
| 28 | 40 | 960 | | | | | 471 | 372 | 301 | 249 |
| 32 | 46 | 1,104 | | | | | | 425 | 344 | 284 |
| 36 | 51 | 1,224 | | | | | | 478 | 387 | 320 |
| 40 | 57 | 1,368 | | | | | | | 430 | 356 |
| 44 | 63 | 1,512 | | | | | | | 473 | 391 |
| 48 | 69 | 1,656 | | | | | | | | 427 |
| 52 | 74 | 1,776 | | | | | | | | 462 |
| 56 | 80 | 1,920 | | | | | | | | 500 |
| GPM FACTOR | | | 0.084 | 0.0232 | 0.0335 | 0.0455 | 0.0595 | 0.0753 | 0.0930 | 0.1125 |
| BPH FACTOR | | | 0.0120 | 0.0331 | 0.0479 | 0.0650 | 0.0850 | 0.1076 | 0.1329 | 0.1607 |

500 Max RPM BHP= (GPM XPSI) / 1543
 All figures based on 100% volumetric efficiency

Applications:

- * Hydrostatic Testing
- * Water Blasting/
 Jetting
- * Chemical Injection
- * Concrete Demolition
- * Water Disposal

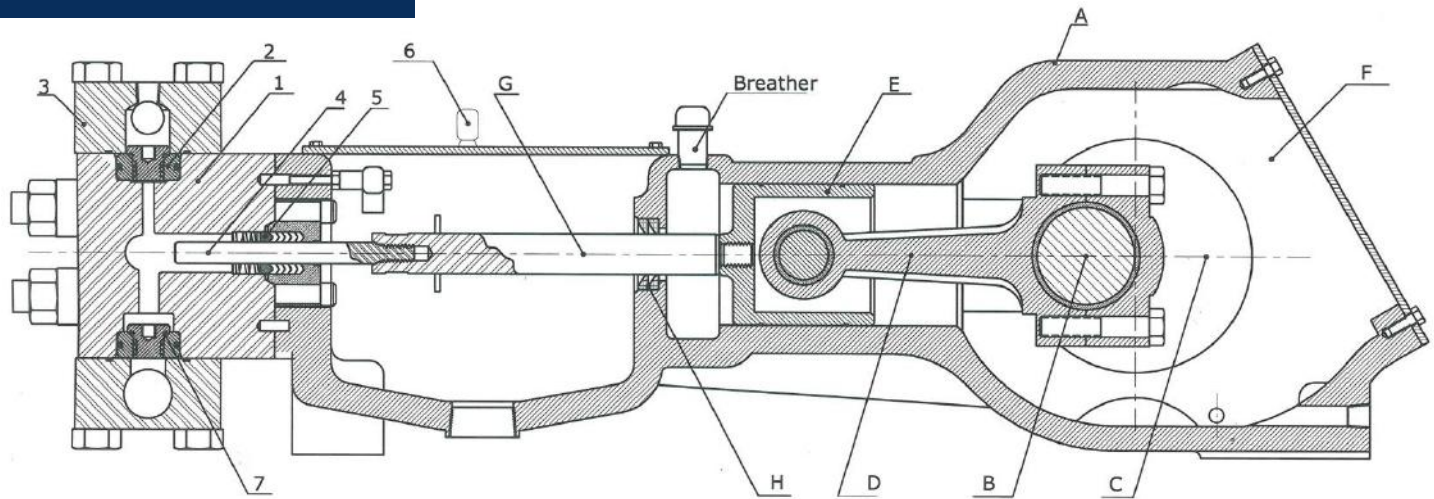
921 Seaco Court, Deer Park, TX 77536, USA

Tel: 1-713-864-3366 / Fax: 1-713-864-3252

Email: sales@tritanpump.com

www.tritanpump.com

Series 5200 SX



SPECIFICATIONS

- * Number of Plungers 5
- * Stroke Length: 3-1/2" (89 mm)
- * Plunger Load 9940 lbs
- * Pump Weight 2180 lbs
- * Oil Capacity 5.5 U.S gallons
- * Suction Connection 1-1/2" NPT
- * Discharge Connection 1" or Autoclave

FLUID END

- 1) Fluid End Body:** Stainless steel alloys for high pressure applications with generous radii at intersecting bores reduces stress points that can cause fluid block cracks. Smooth flow body design reduces flow velocity, turbulence and pulsation-virtually eliminates cavitation.
- 2) Valves:** . All stainless steel fluid end pumps are furnished with cone seat internal spring non-tapered seat style valves. All valves are vertical eliminating valve guide friction drag found in horizontal valves.
- 3) Valve Covers:** Stainless steel fluid end with bolts- on valve covers to prevent galling.
- 4) Plungers:** Plunger materials available are: 17-4PH (standard), colmonoy coated stainless steel, and ceramic
- 5) Packing:** Chevron "V" ring style high pressure plunger packing is furnished in all pumps, changed in minutes without fluid block removal.
- 6) Plunger Lubrication:** Water packing lubrication is standard for all stainless steel high pressure pumps. Grease, Oil drip, and forced feed lubrication are furnished as designated.
- 7) Metal to metal valve seating:** Precision metal to metal, plus O-Ring to metal, valve seating result in 98% volumetric efficiency –reduces horsepower requirements.

POWER END

- A) Power Frame:** High strength ductile iron alloy casting with heavy wall sections well ribbed to insure rigid construction, totally enclosed with sealed access cover
- B) Crankshaft:** Ductile iron for inherent shock load damping, mounted with center line of shaft on center line of cross-head. Crankshafts may extend from either side.
- C) Crankshaft Bearings:** Interchangeable heavy duty roller bearing. Minimum L-10 rated life of 60,000 hours at maximum RPM.
- D) Connecting Rods:** All TriTan plunger pumps are equipped with H-type connecting rods, with replaceable inserts.
- E) Crossheads:** High strength alloy castings, cross head and guides are Cylindrical for maximum bearing area and alignment, Crosshead pins are hardened and ground steel.
- F) Lubrication:** All power end parts are lubricated by splash system from oil in crankcase reservoir. Power frame has an oil return channel, from front of crossheads back to crankcase, to permit constant circulation of oil and to help keep oil cool.
- G) Pony Rods:** Pony rods are polished stainless steel, independent of crosshead and plunger.
- H) Pony Rod Seals:** Double acting lip seals around pony rod-prevents oil leakage from the inside and precludes contamination entering from the outside.



McFarland – TriTan, LLC
921 Seaco Court, Deer Park, TX 77536
Tel :1-713-864-3366 | Fax : 1-713-864-3252
Email: sales@tritanpump.com, www.tritanpump.com

921 Seaco Court, Deer Park, TX 77536, USA

Tel: 1-713-864-3366 / Fax: 1-713-864-3252

Email: sales@tritanpump.com

www.tritanpump.com

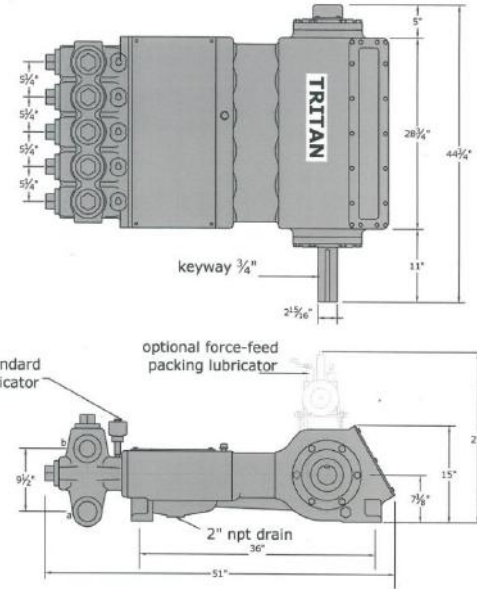
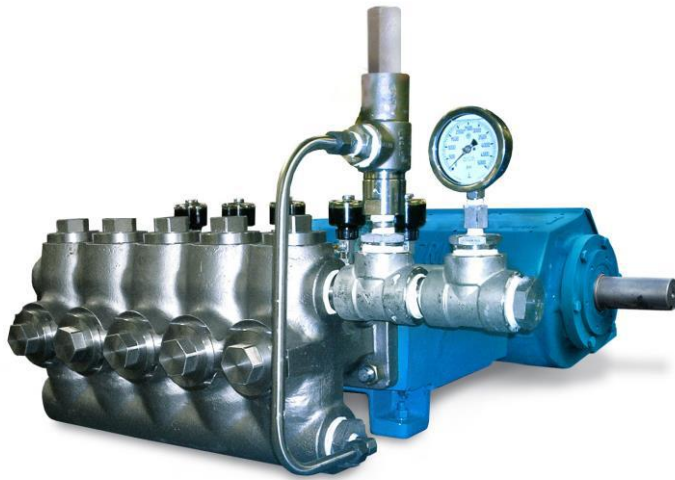


McFarland – TriTan, LLC
 The “High Pressure” Specialists!

Series 5225 AB/DI/SS

**API 674 Compliant
 Quintuplex Plunger Pump**

Pressure to 5,250 PSI | Flow to 344 GPM | Power to 300 HP



| DISPLACEMENT VOLUME (100% VOL.EFF.) | | | PUMP SPEED IN CRANKSHAFT REVOLUTIONS PER MINUTE | | | | | | | | |
|-------------------------------------|-----|--------|---|------------------------|------------------------|------------------------|--------------------|------------------------|------------------------|--------|--|
| | | | 1-3/8" 5,250 PSI | 1-1/2" 5,000 PSI | 1-5/8" 4,500 PSI | 1-3/4" 3,850 PSI | 2" 2,950 PSI | 2-1/4" 2,300 PSI | 2-1/2" 1,875 PSI | | |
| GPM | BPH | BPD | | | | | | | | | |
| 15 | 21 | 514 | 104 | 87 | 74 | 64 | | | | | |
| 20 | 28 | 682 | 138 | 116 | 99 | 85 | 65 | 52 | | | |
| 25 | 36 | 860 | 173 | 145 | 124 | 107 | 82 | 65 | 52 | | |
| 30 | 43 | 1,028 | 207 | 174 | 149 | 128 | 98 | 77 | 65 | | |
| 40 | 57 | 1,369 | 277 | 232 | 198 | 171 | 131 | 103 | 84 | 58 | |
| 50 | 72 | 1,723 | 346 | 290 | 248 | 213 | 163 | 129 | 105 | 73 | |
| 60 | 86 | 2,054 | 415 | 348 | 297 | 256 | 196 | 155 | 125 | 87 | |
| 70 | 100 | 2,408 | 484 | 407 | 347 | 299 | 229 | 181 | 146 | 102 | |
| 80 | 114 | 2,739 | | 465 | 396 | 341 | 261 | 207 | 167 | 116 | |
| 90 | 129 | 3,093 | | | 446 | 384 | 294 | 232 | 188 | 131 | |
| 100 | 143 | 3,423 | | | 495 | 427 | 327 | 258 | 209 | 145 | |
| 120 | 171 | 4,108 | | | | | 392 | 310 | 251 | 174 | |
| 140 | 200 | 4,793 | | | | | 457 | 361 | 293 | 203 | |
| 160 | 228 | 5,477 | | | | | | 413 | 335 | 232 | |
| 180 | 257 | 6,168 | | | | | | 465 | 376 | 261 | |
| 200 | 285 | 6,847 | | | | | | | 418 | 290 | |
| 240 | 343 | 8,239 | | | | | | | 502 | 349 | |
| 280 | 399 | 9,576 | | | | | | | | 406 | |
| 320 | 457 | 10,978 | | | | | | | | 465 | |
| 344 | 492 | 11,808 | | | | | | | | 500 | |
| GPM FACTOR | | | 0.1446 | 0.1722 | 0.2020 | 0.2343 | 0.3060 | 0.3873 | 0.4782 | 0.6685 | |
| BPH FACTOR | | | 0.2066 | 0.2460 | 0.2885 | 0.3347 | 0.4371 | 0.5532 | 0.6831 | 0.9837 | |
| | | | 500 Max RPM BHP=(GPM XPSI) / 1543 | | | | | | | | |
| | | | All figures based on 100% volumetric efficiency | | | | | | | | |

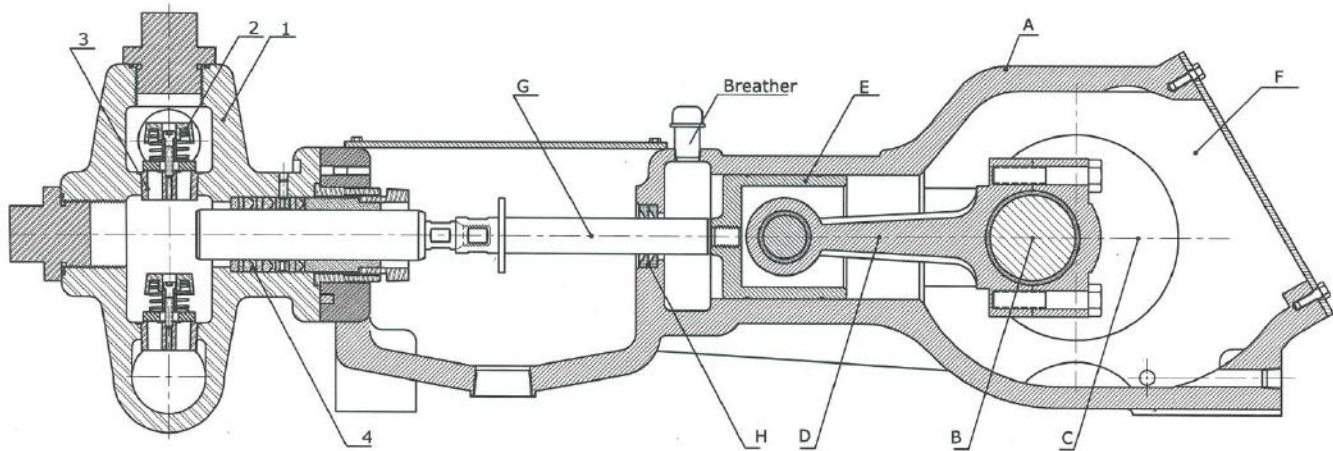
921 Seaco Court, Deer Park, TX 77536, USA

Tel: 1-713-864-3366 / Fax: 1-713-864-3252

Email: sales@tritanpump.com

www.tritanpump.com

Series 5225 AB/DI/SS



SPECIFICATIONS

* Number of Plungers 5 * Stroke Length: 4-1/2" (114 mm) * Plunger Load 9940 lbs * Pump Weight 1875 lbs
* Oil Capacity 5.5 U.S gallons * Suction Connection 2-1/2" NPT * Discharge Connection 2"

FLUID END

- 1) Fluid End Body:** One piece cast ductile iron or Aluminum Bronze.
- 2) Valves:** A- CELCON Valve-Bronze seat or
B- CELCON Valve- stainless steel seat.
C- Hardened stainless steel valve & seat
- 3) Tapered seated valve decks.**
- 4) Plungers:** Plunger materials available are: 17-4PH (standard), colmonoy coated stainless steel, ceramic, and tungsten carbide.

Services:

- * Crude Oil
- * Fresh Water
- * Salt Water
- * Corrosive Fluids

POWER END

- A) Power Frame:** High strength ductile iron alloy casting with heavy wall sections well ribbed to insure rigid construction, totally enclosed with sealed access cover
- B) Crankshaft:** Ductile iron for inherent shock load damping, mounted with center line of shaft on center line of cross-head. Crankshafts may extend from either side.
- C) Crankshaft Bearings:** Interchangeable heavy duty roller bearing. Minimum L-10 rated life of 60,000 hours at maximum RPM.
- D) Connecting Rods:** All TriTan plunger pumps are equipped with H-type connecting rods, with replaceable inserts.
- E) Crossheads:** High strength alloy castings, cross head and guides are Cylindrical for maximum bearing area and alignment, Crosshead pins are hardened and ground steel.
- F) Lubrication:** All power end parts are lubricated by splash system from oil in crankcase reservoir. Power frame has an oil return channel, from front of crossheads back to crankcase, to permit constant circulation of oil and to help keep oil cool.
- G) Pony Rods:** Pony rods are polished stainless steel, independent of crosshead and plunger.
- H) Pony Rod Seal:** Double acting lip seals around pony rod-prevents oil leakage from the inside and precludes contamination entering from the outside.



McFarland – TriTan, LLC
921 Seaco Court, Deer Park, TX 77536
Tel :1-713-864-3366 | Fax : 1-713-864-3252
Email: sales@tritanpump.com, www.tritanpump.com

921 Seaco Court, Deer Park, TX 77536, USA

Tel: 1-713-864-3366 / Fax: 1-713-864-3252 Email: sales@tritanpump.com

www.tritanpump.com

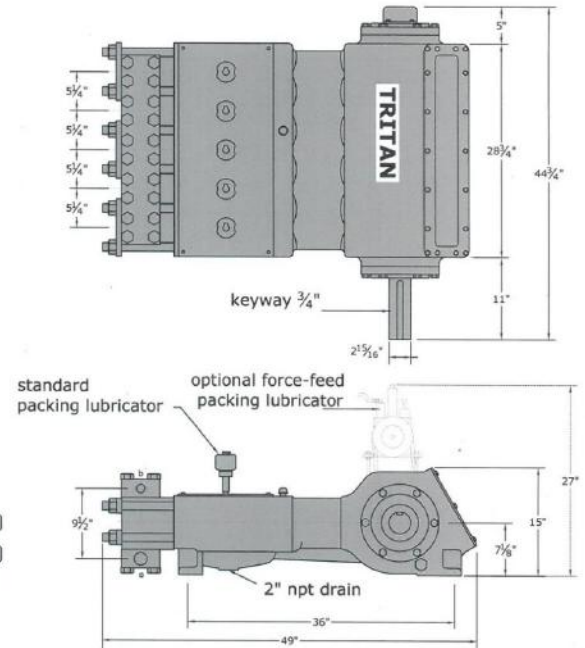
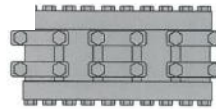


McFarland – TriTan, LLC
 The “High Pressure” Specialists!

Series 5225 SX

**API 674 Compliant
 Quintuplex Plunger Pump**

Pressure to 40,000 PSI | Flow to 72 GPM | Power to 300 HP



| DISPLACEMENT VOLUME (100% VOL.EFF.) | | | PUMP SPEED IN CRANKSHAFT REVOLUTIONS PER MINUTE | | | | | | | |
|-------------------------------------|-----|-------|---|-----------------|-----------------|-----------------|---------------|-------------------|------------------|------------------|
| | | | 3/8" 40,000 PSI | 5/8" 30,000 PSI | 3/4" 22,000 PSI | 7/8" 16,530 PSI | 1" 12,655 PSI | 1-1/8" 10,000 PSI | 1-1/4" 8,100 PSI | 1-3/8" 6,695 PSI |
| GPM | BPH | BPD | | | | | | | | |
| 0.6 | 0.8 | 20 | 55 | | | | | | | |
| 1 | 1.4 | 34 | 92 | | | | | | | |
| 2 | 3 | 67 | 183 | 67 | | | | | | |
| 3 | 4 | 102 | 275 | 101 | 70 | | | | | |
| 4 | 6 | 137 | 367 | 134 | 93 | 68 | 52 | | | |
| 6 | 9 | 205 | | 201 | 139 | 103 | 78 | 62 | | |
| 8 | 11 | 273 | | 268 | 186 | 137 | 105 | 83 | 67 | 55 |
| 12 | 17 | 412 | | 403 | 278 | 205 | 157 | 124 | 100 | 83 |
| 16 | 23 | 550 | | | 371 | 274 | 209 | 165 | 134 | 111 |
| 20 | 29 | 684 | | | 464 | 342 | 261 | 207 | 167 | 138 |
| 24 | 34 | 823 | | | | 410 | 314 | 248 | 201 | 166 |
| 28 | 40 | 962 | | | | 479 | 366 | 289 | 234 | 194 |
| 32 | 46 | 1,069 | | | | | 418 | 331 | 268 | 221 |
| 36 | 51 | 1,235 | | | | | 471 | 372 | 301 | 249 |
| 40 | 57 | 1,373 | | | | | | 413 | 334 | 277 |
| 44 | 63 | 1,507 | | | | | | 455 | 368 | 304 |
| 50 | 71 | 1,716 | | | | | | | 418 | 346 |
| 56 | 80 | 1,919 | | | | | | | 468 | 387 |
| 64 | 92 | 2,197 | | | | | | | | 443 |
| 72 | 102 | 2,478 | | | | | | | | 500 |
| GPM FACTOR | | | 0.0108 | 0.0298 | 0.0431 | 0.0585 | 0.0765 | 0.0968 | 0.1196 | 0.1446 |
| BPH FACTOR | | | 0.0154 | 0.0426 | 0.0616 | 0.0836 | 0.1093 | 0.1383 | 0.1709 | 0.2066 |

500 Max RPM BHP=GPM XPSI / 1543
 All figures based on 100% volumetric efficiency

Applications:

- * Hydrostatic Testing
- * Water Blasting/
 Jetting
- * Chemical Injection
- * Concrete Demolition
- * Water Disposal

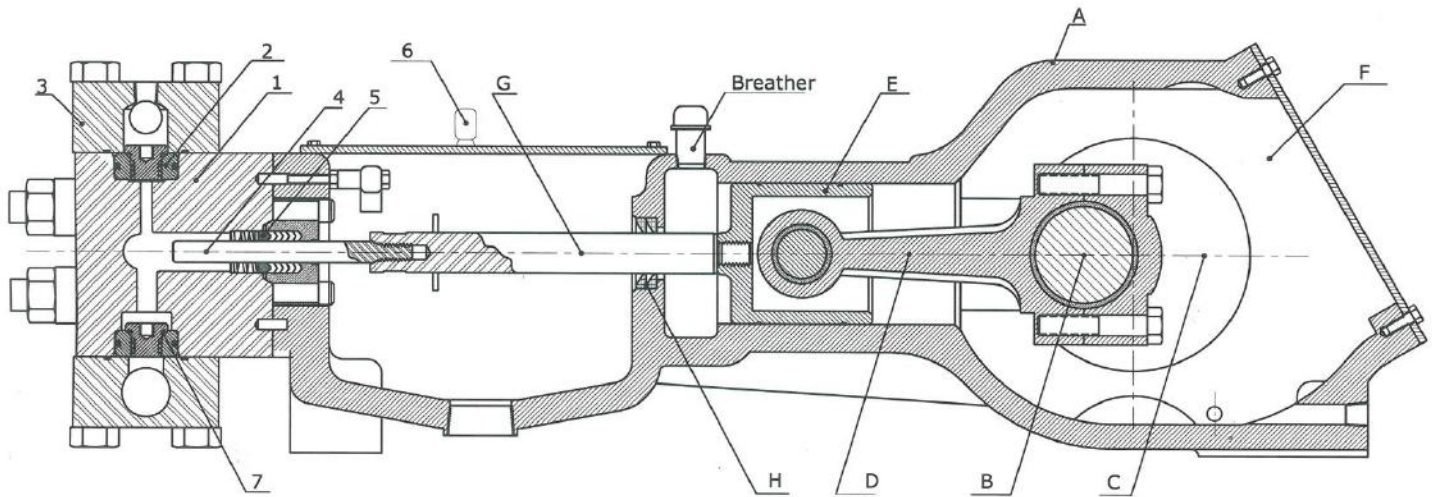
921 Seaco Court, Deer Park, TX 77536, USA

Tel: 1-713-864-3366 / Fax: 1-713-864-3252

Email: sales@tritanpump.com

www.tritanpump.com

Series 5225 SX



SPECIFICATIONS

- * Number of Plungers 5
- * Stroke Length: 4-1/2" (114 mm)
- * Plunger Load 9940 lbs
- * Pump Weight 2180 lbs
- * Oil Capacity 5.5 U.S gallons
- * Suction Connection 1-1/2" NPT
- * Discharge Connection 1" or Autoclave

FLUID END

- 1) Fluid End Body:** Stainless steel alloys for high pressure applications with generous radii at intersecting bores reduces stress points that can cause fluid block cracks. Smooth flow body design reduces flow velocity, turbulence and pulsation-virtually eliminates cavitation.
- 2) Valves:** . All stainless steel fluid end pumps are furnished with cone seat internal spring non-tapered seat style valves. All valves are vertical eliminating valve guide friction drag found in horizontal valves.
- 3) Valve Covers:** Stainless steel fluid end with bolts- on valve covers to prevent galling.
- 4) Plungers:** Plunger materials available are: 17-4PH (standard), colmonoy coated stainless steel, and ceramic.
- 5) Packing:** Chevron "V" ring style high pressure plunger packing is furnished in all pumps, changed in minutes without fluid block removal.
- 6) Plunger Lubrication:** Water packing lubrication is standard for all stainless steel high pressure pumps. Grease, Oil drip, and forced feed lubrication are furnished as designated.
- 7) Metal to metal valve seating:** Precision metal to metal, plus O-Ring to metal, valve seating result in 98% volumetric efficiency –reduces horsepower requirements.

POWER END

- A) Power Frame:** High strength ductile iron alloy casting with heavy wall sections well ribbed to insure rigid construction, totally enclosed with sealed access cover
- B) Crankshaft:** Ductile iron for inherent shock load damping, mounted with center line of shaft on center line of cross-head. Crankshafts may extend from either side.
- C) Crankshaft Bearings:** Interchangeable heavy duty roller bearing. Minimum L-10 rated life of 60,000 hours at maximum RPM.
- D) Connecting Rods:** All TriTan plunger pumps are equipped with H-type connecting rods, with replaceable inserts.
- E) Crossheads:** High strength alloy castings, cross head and guides are Cylindrical for maximum bearing area and alignment, Crosshead pins are hardened and ground steel.
- F) Lubrication:** All power end parts are lubricated by splash system from oil in crankcase reservoir. Power frame has an oil return channel, from front of crossheads back to crankcase, to permit constant circulation of oil and to help keep oil cool.
- G) Pony Rods:** Pony rods are polished stainless steel, independent-not part of crosshead or plunger.
- H) Pony Road Seals:** Double acting lip seals around pony rod-prevents oil leakage from the inside and precludes contamination entering from the outside.



McFarland – TriTan, LLC
921 Seaco Court, Deer Park, TX 77536
Tel : 1-713-864-3366 | Fax : 1-713-864-3252
Email: sales@tritanpump.com, www.tritanpump.com



McFarland – TriTan, LLC
The “High Pressure” Specialists!

Series 3085 SX

Hydrostatic Test Unit

Pressure to 22,500 PSI | Flow 5-24 GPM | Hydraulic/Diesel/Electric Powered

Hydraulically Powered 3085 SX-DHS-HTS

Power Diesel / Hydraulic diesel engine with a direct mounted compensated hydraulic pump.

Precision Control Regulation and control of the hydraulic fluid 3,000 PSI is easier than regulation and control of the pump discharge fluid at 22,500 PSI. And because a gear reducer is incorporated in the system, a higher RPM Hydraulic motor can be utilized.

Off-The – Shelf Control Valve A standard hydraulic control valve is utilized to control the output pressure by controlling the flow of the lower pressure hydraulic and not the more damaging high pressure test fluid.

Longer Control Parts Life Hydraulic control valve parts are never exposed to more than 3,000 PSI, extending their life beyond parts that are exposed to 22,500 PSI. Any repair/supply company in the world can repair or replace the control valve if needed.

Compact Design Hydraulic power allows for a small footprint.

Power Options Hydraulic powered test systems can be powered by a dedicated engine or, in the case of truck mounted system by, a PTO mounted hydraulic pump off of the truck chassis engine.

Hydraulic Power Options

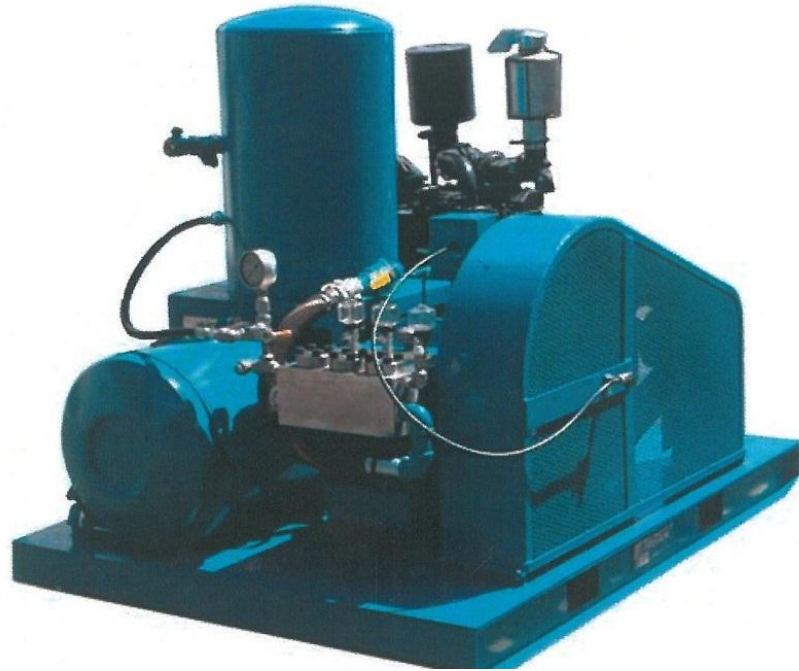
- A. Independent auxiliary deck engine
- B. PTO mounted hydraulic pump for power from the primary truck engine

Diesel Powered 3085 SX- DS – HTS

Power Diesel Engine
Belt Drive or gear reducer power transmission
Infiniti Pressure Control through an Autoclave needle valve control panel.

Electrically Powered 3085 SX- DHS-HTS

Power Electric
Belt Drive or gear reducer power transmission.
Infiniti Pressure Control through an Autoclave needle valve control panel.



Oilfield Testing Applications

- BOP
- Pipe Lines
- Well Casing
- Lubricator
- Choke and Kill Lines
- Christmas Tree

921 Seaco Court, Deer Park, TX 77536, USA

Tel: 1-713-864-3366 / Fax: 1-713-864-3252

Email: sales@tritanpump.com

www.tritanpump.com

Series 3085 SX Hydrostatic Test Unit

FLUID END

- Stainless steel single block for high pressure applications.
- Easily accessible and replaceable packing.
- Bolts on cylinder head and valve covers to prevent galling
- Hardened and polished stainless steel plungers.
- Oil drips plunger lubrication system.
- Chevron "V" style spring loaded packing.
- Furnished with cone seat internal spring, non-tapered seat style valves.

POWER END

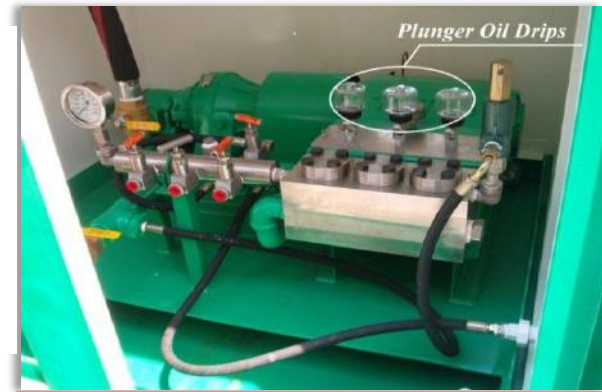
- High strength ductile iron alloy casting with heavy wall
- Crankshaft with heavy duty roller bearings.
- H-type connecting rods with replaceable inserts.
- Semi-cylindrical high strength alloy cast crossheads with Hardened ground steel pins.
- Polished stainless steel pony rods.
- Splash-gravity lubrication.

GENERAL

- A single control lever controls the entire test.
One trained operator can run a test in minutes.
- Pressure and flow combinations for all oilfield applications
- Data port for a digital or paper record.
- All TriTan test systems are fully tested at the TriTan factory prior to shipment.
- All TriTan test systems are shipped complete with two (2) maintenance and operation manuals
- Standard protective coating is a two-part high build epoxy for long life.

OPTIONS

- Prefill pumps available for all models.
- Trailers to fit all applications available for all models.
- Poly and stainless steel water and glycol tanks available for all models.
- Paper or digital data recorders.
- Certified offshore skid with fork rails, four point lift.
- Diesel/hydraulic and electric power options.
- Motor starters on electric motor powered systems.
- Enclosed and heated cold weather package.
- Filtration options to meet the filtration requirements of every application.
- Paint and protective coating options are available to meet any specifications.
- 10,000, 15,000 & 20,000 PSI high pressure hose with quick disconnects.
- Powered plunger lubrication oil delivery system.
- Non swivel hose storage reel.



Glycerin filled pressure gauge and three manifold ports for testing and discharge on the left of the complete triplex 3085 SX Pump. The pump features pressure relief valve and lubrication pots on top.



A compact fully enclosed hydrostatic test unit featuring its own tool box, water and fuel supply tanks



McFarland – TriTan, LLC
921 Seaco Court, Deer Park, TX 77536
Tel :1-713-864-3366 | Fax : 1-713-864-3252
Email: sales@tritanpump.com, www.tritanpump.com

921 Seaco Court, Deer Park, TX 77536, USA

Tel: 1-713-864-3366 / Fax: 1-713-864-3252

Email: sales@tritanpump.com

www.tritanpump.com