

Soft seated butterfly valve

airpower
europa gmbh



competence in actuators, valves and more

flu-con SERIES 23

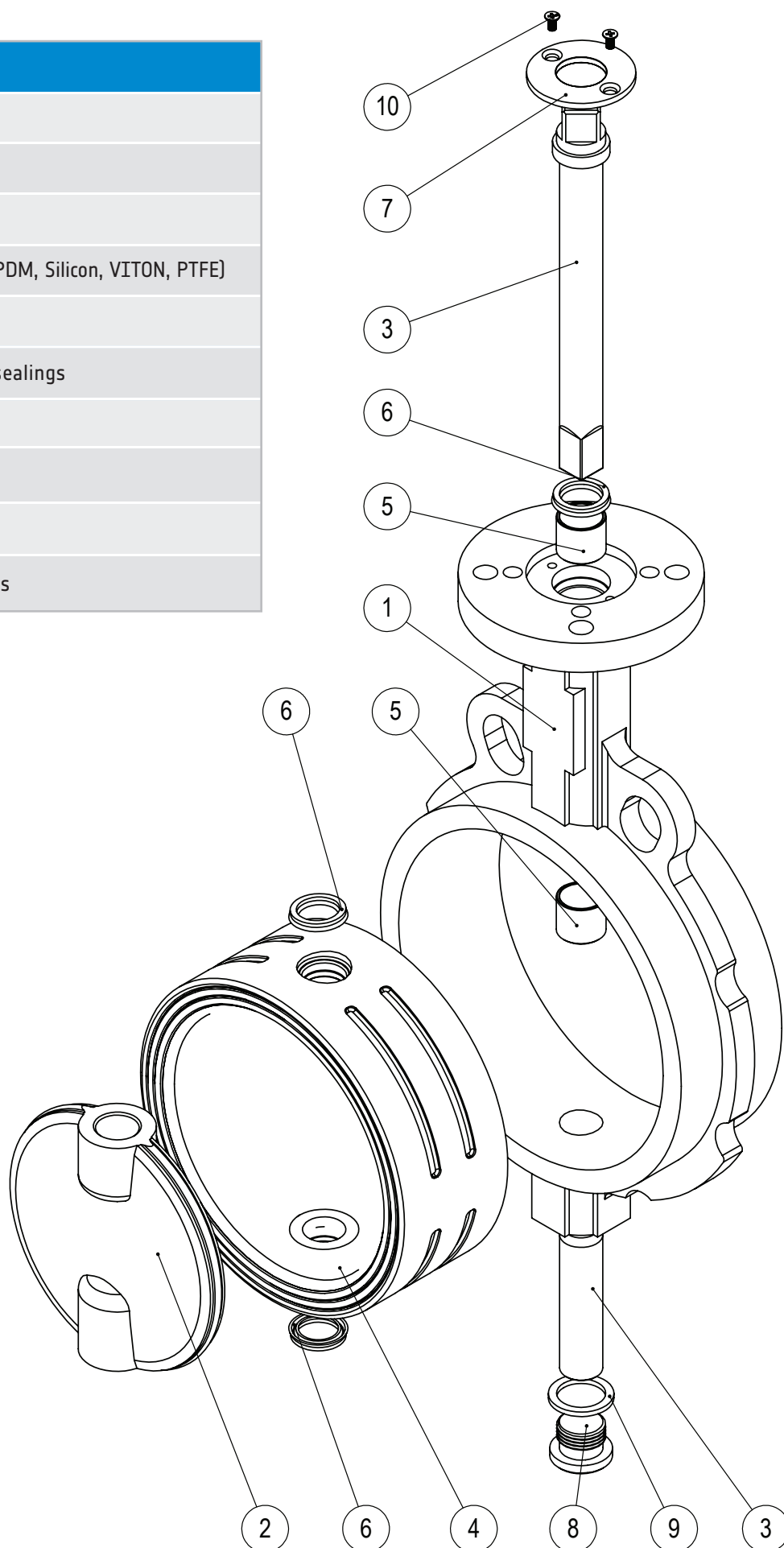


www.airpower-gmbh.com

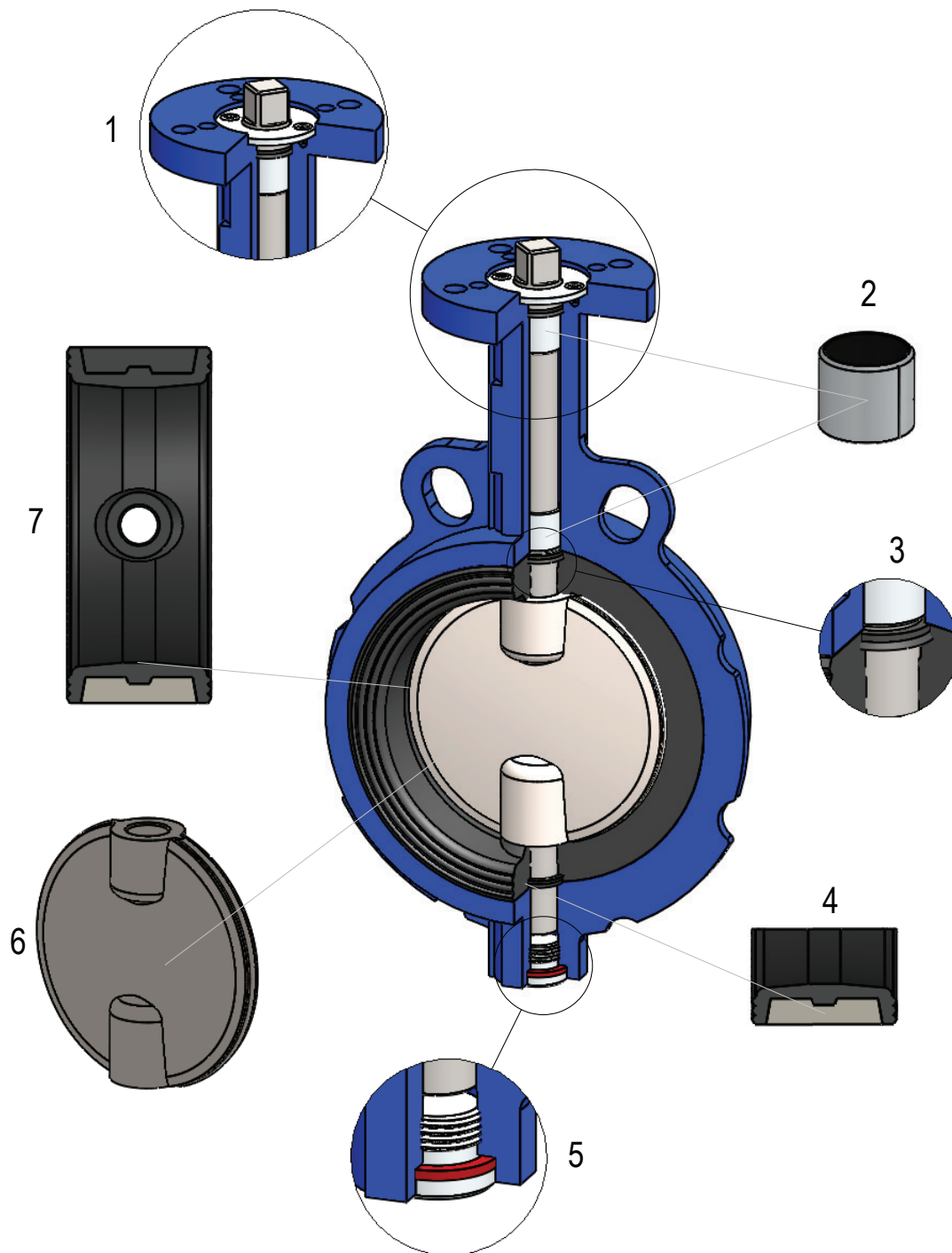
Technical specifications

	Wafer type	Standard version	By request
	Nominal diameter	DN40 to DN1200, 1 1/2" to 48"	
Mounting between flanges	DN40 (1 1/2") to DN500 (20")	EN1092 -1 PN10, PN16, ANSI150	EN1092-1 PN6, ASME B16.1 CLASS125
	DN600 (24") and above	EN1092 - 1 PN10 Other standards by request	PN6, PN16, ANSI150
Standard pressure	DN50 (2") to DN200 (8")	16 bar (232 psi)	
	DN250 (10") and above	10 bar (145 psi)	
Maximum pressure	DN50 (2") to DN600 (24")	20 bar (290 psi)	
	DN700 (28") and above	16 bar (232 psi)	
	Body	Ductile casting GGG40 (EN-JS-1030) (EN-GJS-400-15)	Nodular cast GGG40.3 (EN-JS 1025) (EN)(EN-GJS-400-18-LT), Stainless steel 1.4408/AISI 316 A743 (CF8M), Nodular graphite EN-GJL250 (GG25), Cast steel 1.0619/GP240GH (G-SC25)/A216 WCB
	Disc	Stainless steel 1.4408	Stainless steel 1.4408(polished), Stainless steel 1.4404, Alu-bronze 2.0975, Hastelloy 2.4610, Nodular casting 1.0619, Stainless steel 1.4408/ ECTFE coated, Duplex 1.4462
	The temperature of the medium is based on the possible sealing (elastomers)	EPDMH -30°C to +130°C NBR -20°C to +80°C	VITON/FKM - 5°C to +150°C PTFE/VITON 0°C to +150°C Silicon -30°C to +135°C EPDMH/FDA -20°C to +130°C PTFE/EPDM 0°C to +130°C CSM/Hypalon -20°C to +100°C

Pos.-No.	Description
1	Body
2	Disc
3	Stem/Bolt
4	Seat (NBR, EPDM, Silicon, VITON, PTFE)
5	Bearing bush
6	V-type ring sealings
7	Safety ring
8	Screw plug
9	Seal ring
10	Safety screws



Structure of Serie 23 DN40 (1,5'') – DN1200 (48'')



- | | |
|---|---|
| 1 | The stem safety ring is made of stainless steel and designed with a special geometry |
| 2 | The PTFE coated steel-bearing bushing ensures a high switching frequency |
| 3 | The V-type ring as an additional seal prevents leakage on the shaft |
| 4 | By vulcanizing the elastomer onto a support ring, the stability of the seat is ensured. Thus replacing the seat becomes very easy |
| 5 | The bolt is secured by a locking screw. An additional sealing ring ensures that the inside of the bolt is protected against dirt and liquids |
| 6 | The disc with the two-part shaft construction improves the Cv value of the butterfly valve and avoids turbulence. The shape of the disc edge ensures a low operating torque and extends the life of the butterfly valve |
| 7 | The special seat geometry guarantees a longer lifespan of the sealing. Automation with competitive prices. Ideal for vacuum applications. Easy mounting between two flanges |

Series 23		Torque value at closed butterfly valve 16 bar (Nm)	Torque value at closed butterfly valve 10 bar (Nm)	Torque value at closed butterfly valve 6 bar (Nm)	Torque value at closed butterfly valve 3 bar (Nm)
DN	NPS				
DN40	1 1/2"	12,10	11,40	10,20	9,80
DN50	2"	14,10	13,20	12,00	11,40
DN65	2 1/2"	14,80	13,60	12,50	12,10
DN80	3"	22,40	21,00	19,80	18,80
DN100	4"	41,53	37,80	35,00	32,20
DN125	5"	66,33	59,90	54,80	49,70
DN150	6"	103,80	93,20	84,20	74,60
DN200	8"	194,80	171,70	152,50	135,60
DN250	10"	332,00	288,10	249,70	214,60
DN300	12"	502,60	429,30	372,80	316,30
DN350	14"		622,20	542,30	470,40
DN400	16"		859,50	745,60	622,20
DN450	18"		1152,30	982,80	813,40
DN500	20"		1480,30	1254,00	1028,90
DN600	24"		2133,40	1830,10	1525,10
DN700	28"		3599,00	3059,00	2519,00
DN800	32"		4740,00	3981,00	3270,00
DN900	36"		7200,00	5976,00	5110,00
DN1000	40"		10500,00	8940,00	7350,00
DN1200	48"		15060,00	12800,00	10540,00

Note:

The table values refer to water, sea water, and hydrocarbon lubricants. Temperatures from 0°C to 80°C. Butterfly valves are activated at least once a month. For other liquid and lubricating gas applications multiply the values by 1.25. For lubricant-free and dry media the values shall be multiplied by 1.3.

The operating torque value in the table is the sum of all friction and resistance values for the opening and closing of the disc at the specified pressure difference.

The effect of the dynamic torque is not considered in the table.

When sizing the actuators, the torque value in the table must be multiplied by 1.25.

The butterfly valve can be supplied with four different discs, which can be adapted to the differential pressure. The reference value is the pressure on the butterfly valve and the differential pressure. For example, with a butterfly valve size DN125 PN 16. If the differential pressure is nine bar, a 75% disc should be used. The disc can be operated at 12 bar (75% of 16 bar).

Maximum permissible spindle torques in Nm for Series 23

Dimension		DN50 2"	DN65 2 1/2"	DN80 3"	DN100 4"	DN125 5"	DN150 6"	DN200 8"	DN250 10"	DN300 12"
torques (Nm)	material SS420	73	73	112	178	178	446	446	1277	1277

Dimension		DN350 14"	DN400 16"	DN500 20"	DN600 24"	DN700 28"	DN750 30"	DN800 32"	DN900 36"	DN1000 40"	DN1100 44"	DN1200 48"
torques (Nm)	material SS420	2400	2400	5216	9600	9600	24780	24780	49926	49926	54200	58098

Other materials on request!

Flow values Series 23

KV values (m³/h at 1 bar)

Series 23		Opening angle								
DN	NPS	10°	20°	30°	40°	50°	60°	70°	80°	90°
DN40	1 1/2"	0	0	2	5	15	25	43	59	75
DN50	2"	0	0	5	11	21	41	77	101	120
DN65	2 1/2"	0	1	8	22	33	83	111	165	209
DN80	3"	0	6	18	38	53	94	174	279	388
DN100	4"	0	17	38	70	103	170	300	614	750
DN125	5"	0	24	61	115	170	288	494	978	1234
DN150	6"	0	34	88	174	263	434	751	1473	2044
DN200	8"	1	49	153	327	503	826	1406	2668	3924
DN250	10"	8	71	235	518	840	1423	2295	4211	6929
DN300	12"	18	91	324	775	1330	2133	3539	6373	11496
DN350	14"	36	100	486	1188	1788	2634	4147	7153	12558
DN400	16"	54	159	715	1674	2518	3467	5798	10858	15311
DN450	18"	88	271	967	1925	3108	4532	7249	13911	19857
DN500	20"	135	406	1266	2534	4009	6637	9403	16462	25403
DN600	24"	189	585	1874	3657	5283	8344	13224	24315	33315
DN700	28"	241	1211	2775	4829	7853	11096	17797	33332	43899
DN800	32"	343	2045	3848	6209	10955	15550	23452	43683	55441
DN900	36"	531	2614	5253	8189	14550	20702	32219	57256	69229
DN1000	40"	754	3338	6851	10917	18988	27563	42416	70630	82991
DN1200	48"	1071	4940	10746	18338	27935	43873	70523	110368	114824

Kv=m³ water per hour at 20°C and 1 bar of pressure loss.

Cv= 1.167 KV

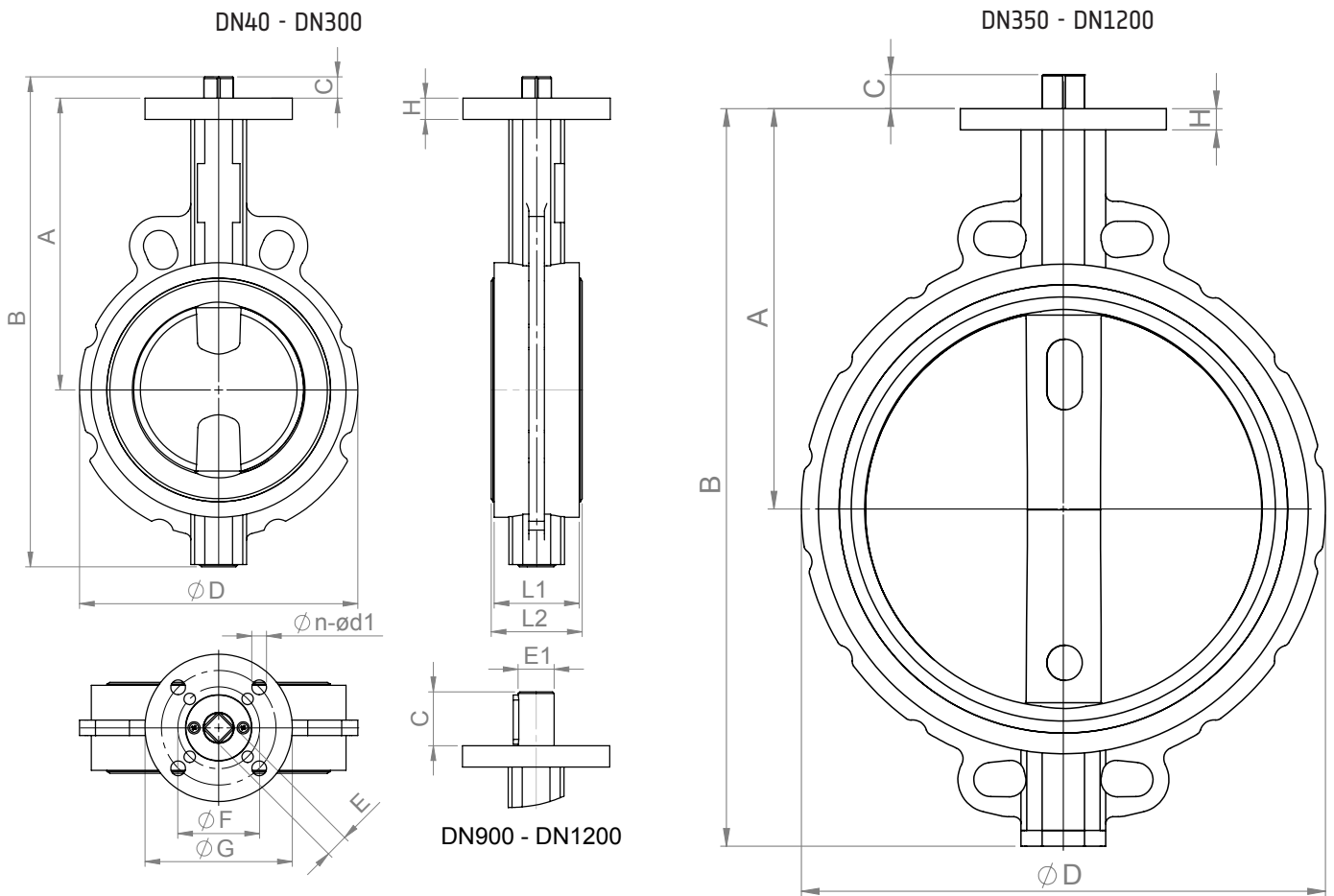
Cv= US gallons of water per minute at 60°F and 1 psi of pressure loss.

Weights Series 23



Dimension	Series 23 (Kg)	
2"	DN50	2,50
2 1/2"	DN65	3,00
3"	DN80	3,30
4"	DN100	4,60
5"	DN125	6,10
6"	DN150	7,90
8"	DN200	12,00
10"	DN250	20,30
12"	DN300	30,00
14"	DN350	44,00
16"	DN400	69,00
18"	DN450	95,00
20"	DN500	112,00
24"	DN600	186,00
28"	DN700	295,00
32"	DN800	390,00
36"	DN900	548,00
40"	DN1000	680,00
48"	DN1200	1050,00

Wafer type body dimensions Series 23 DN40 (1,5") to DN1200 (48") with bare shaft



Dimension	A	B	C	E+E1	D	F	G	n-Ød1	H	L1	L2
DN40	125	190	13,5	11*11	90	50	65	4-Ø7	11	33	36
DN50	140	218	13,5	11*11	105	50	65	4-Ø7	11	43	46
DN65	152	232	13,5	11*11	124	50	65	4-Ø7	11	46	49,5
DN80	159	250	13,5	11*11	137	50	65	4-Ø7	12,5	46	49,5
DN100	178	285	13,5	14*14	170	50/70	90	4-Ø7/Ø9	12,5	52	55,5
DN125	190	320	17,5	14*14	197	70	90	4-Ø9	12,5	56	59
DN150	203	345	17,5	17*17	226	70	90	4-Ø9	13	56	59
DN200	238	405	24,5	17*17	279	70/102	125	4-Ø9/Ø11	14	60	64
DN250	268	475	24,5	22*22	336	102/125	152	4-Ø11/Ø13	15	68	72,5
DN300	306	538	24,5	22*22	396	102/125	152	4-Ø11/Ø13	16	78	81,5
DN350	340	633	30	27*27	446	125	175	4-Ø13	18	78	81,5
DN400	388	710	30	27*27	500	125/140	175	4-Ø13/Ø18	20	102	105
DN450	415	765	39	36*36	545	140	210	4-Ø18	22	114	118
DN500	441	825	49	36*36	600	140/165	210	4-Ø18/Ø21.5	23	127	130,5
DN600	505	950	49	46*46	718	165	210	4-Ø21.5	23	154	158
DN700	624	1129	58	55*55	910	254	300	8-Ø18		165	169
DN800	672	1248	58	55*55	1025	254	300	8-Ø18		190	195
DN900	720	1375	110	Ø90	1125	298	350	8-Ø22		203	208
DN1000	800	1518	120	Ø100	1255	298	350	8-Ø22		216	221
DN1200	941	1785	175	Ø120	1485	356	415	8-Ø32		254	260

Actuation possibilities for butterfly valves

Aluminium hand lever with grid type RHA

- locking, adjustable in 10 positions
- lockable



Gear type HGA

- Ratio from 37:1 to 45:1
- Torque from 150 Nm to 750 Nm
- Gear of die cast aluminium



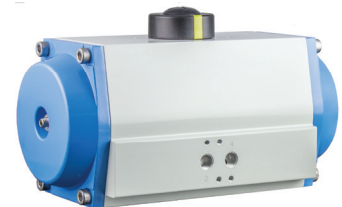
Gear Type HGG

- Ratio from 42:1 to 720:1
- Torque from 497 Nm to 23786 Nm
- Housing made of cast iron and spheroidal graphite



Pneumatic Actuators

- Double acting
- Single acting
- Torque from 2.4 Nm to 13.000 Nm
- Max. Control pressure 8 bar



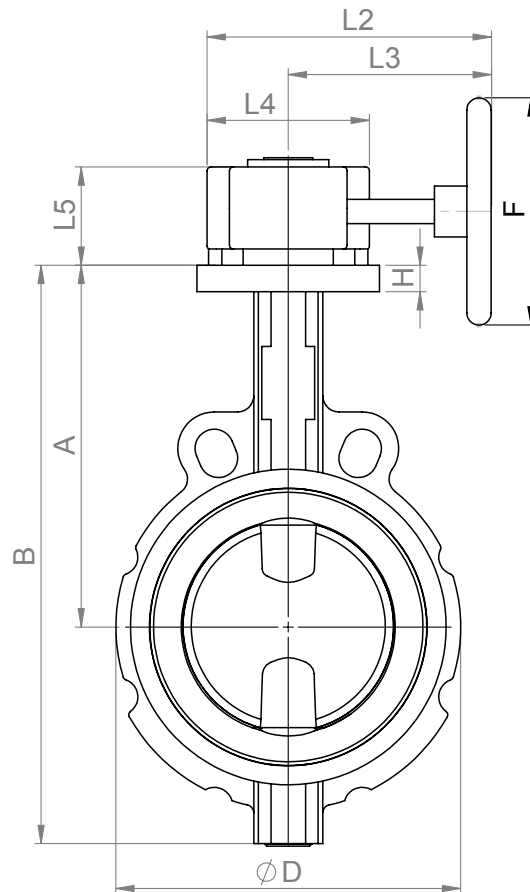
electric actuator „auma“ or other

- Torques of 10 Nm to 32000 Nm
- Terminal voltage: 3-ph AC

Volts	220	230	240	380	400	415	440	460	480	500
Hz	50	50	50	50	50	50	60	60	60	50

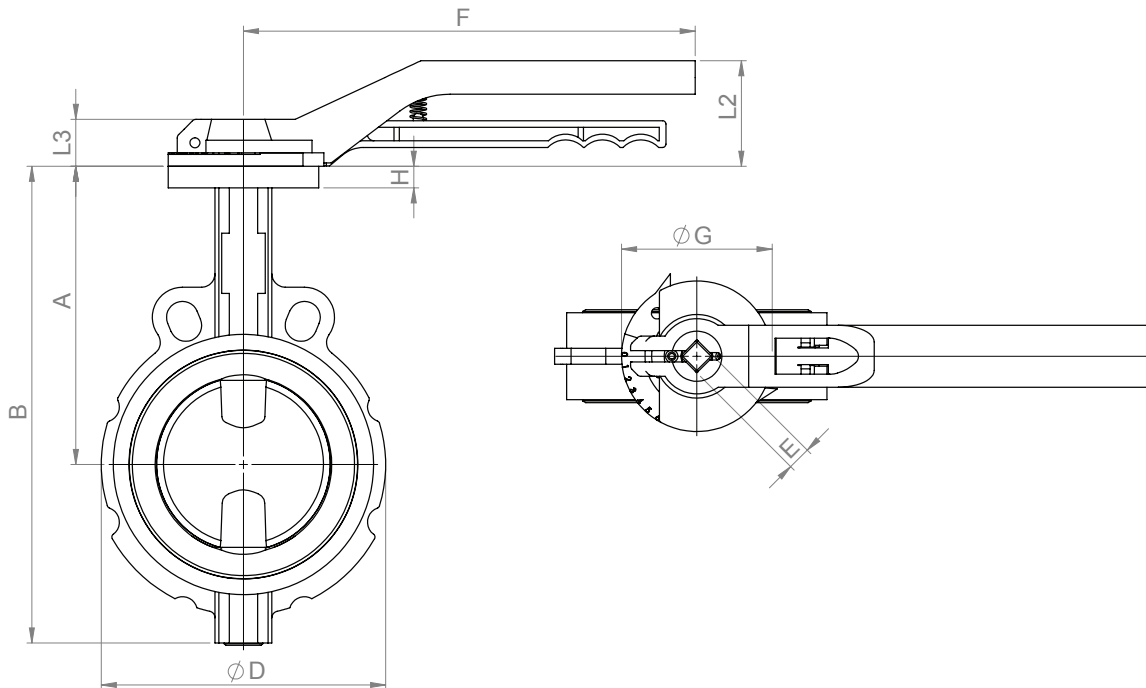


Dimensions Wafer type Series 23 DN40 (1.5") to DN1200 (48") with manual gearbox



Dimension	A	B	D	F	H	L2	L3	L4	L5
DN40	125	190	90	100	11	139	99	80	48
DN50	140	218	105	100	11	139	99	80	48
DN65	152	232	124	100	11	139	99	80	48
DN80	159	250	137	100	12,5	139	99	80	48
DN100	178	285	170	100	12,5	139	99	80	48
DN125	190	320	197	120	12,5	165	115	100	54
DN150	203	345	226	120	13	165	115	100	54
DN200	238	405	279	300	14	293	220	146	71
DN250	268	475	336	300	15	293	220	146	71
DN300	306	538	396	300	16	293	220	146	71
DN350	340	633	446	400	18	291	208	138	72
DN400	388	710	500	400	20	377	277	184	81
DN450	415	765	545	500	22	395	287	210	81
DN500	441	825	600	500	23	483	357	248	91
DN600	505	950	718	500	23	540	382	313	93
DN700	624	1129	910	500		593	448	310	122
DN800	672	1248	1025	500		593	448	310	122
DN900	720	1375	1125	500		658	480	355	160
DN1000	800	1518	1255	500		658	480	355	160
DN1200	941	1785	1485	600		807	575	415	155

Dimensions Wafer type series 23 DN40 (1.5") to DN200 (8") with lever



Dimension	A	B	E	D	F	G	H	L2	L3
DN40	125	190	11*11	90	196	65	11	63	20,5
DN50	140	218	11*11	105	196	65	11	63	20,5
DN65	152	232	11*11	124	196	65	11	63	20,5
DN80	159	250	11*11	137	196	65	12,5	63	20,5
DN100	178	285	14*14	170	270	90	12,5	61	28,5
DN125	190	320	14*14	197	270	90	12,5	61	28,5
DN150	203	345	17*17	226	270	90	13	61	28,5
DN200	238	405	17*17	279	340	125	14	72	35

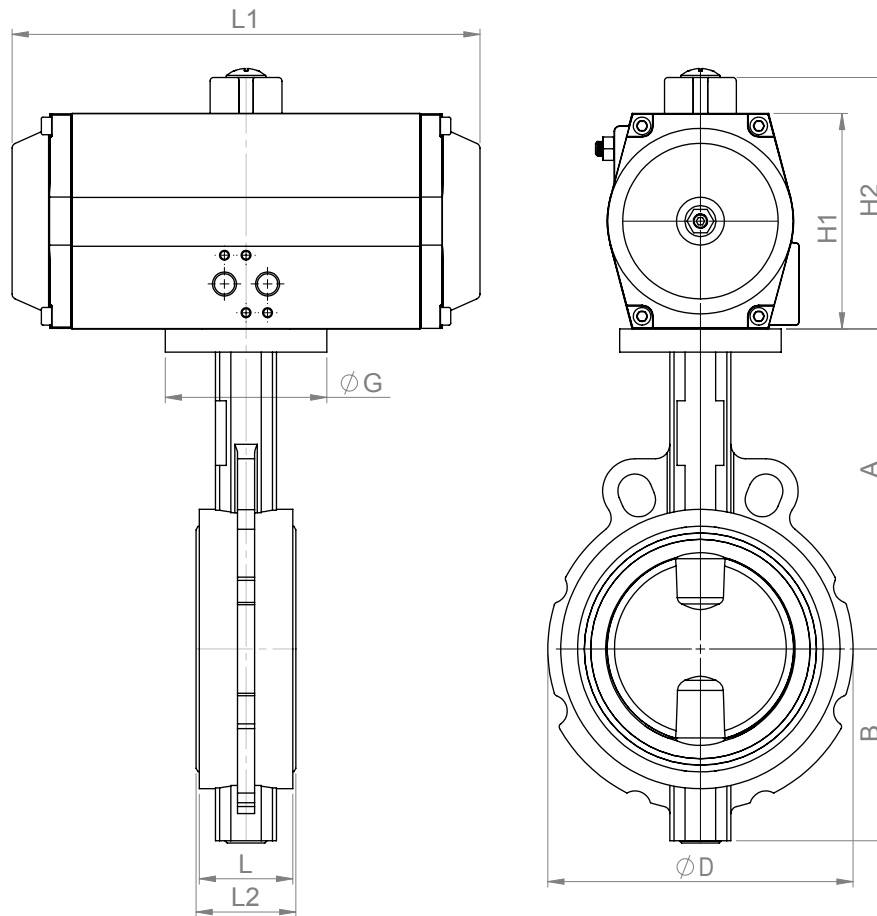
Pictures of Wafer type series 23 with electrical actuator



By request

Dimensions Wafer type series 23 with pneumatic actuators double acting type APD

designed for minimum 6 bar control pressure

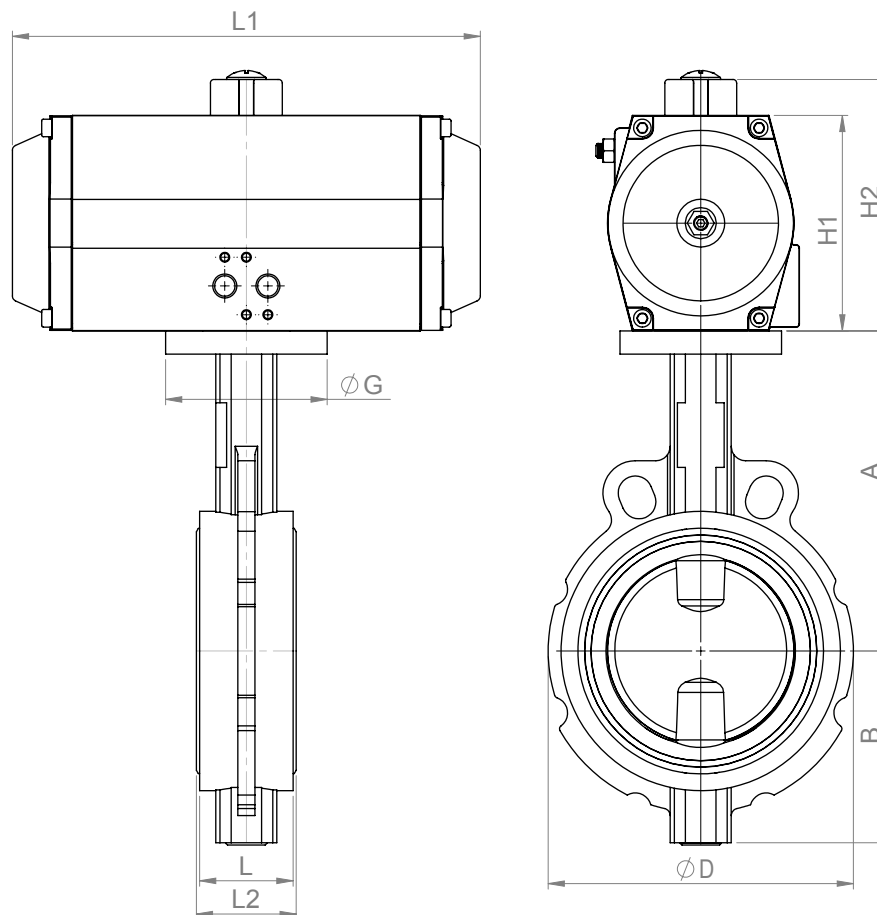


Dimension	A	B	D	G	H1	H2	L	L1	L2	APD
DN40	125	65	90	65	74	94	33	146	36	050
DN50	140	78	105	65	74	94	43	146	46	050
DN65	152	80	124	65	74	94	46	146	49,5	050
DN80	159	91	137	65	88	108	46	168	49,5	060
DN100	178	107	170	90	100	120	52	184	55,5	070
DN125	190	130	197	90	109	129	52	204	59	080
DN150	203	142	226	90	120	140	52	260	59	090
DN200	238	167	279	125	133	153	60	268	64	110
DN250	268	207	336	152	155	175	68	298	72,5	130
DN300	306	232	396	152	172	202	78	390	81,5	140
DN350	340	293	446	175	197	227	78	458	81,5	160
DN400	388	322	500	175	230	250	102	525	105	190
DN450	415	350	545	210	230	250	114	525	118	190
DN500	441	384	600	210	289	319	127	602	130,5	240
DN600	505	445	718	210	328	358	154	722	158	270
DN700	624	505	910	300	348	378	165	758	169	300
DN800	672	576	1025	300	408	438	190	888	195	350

DN900 - DN1200 by request

Dimensions wafer type series 23 with pneumatic actuators single acting type APS

designed for minimum 6 bar control pressure



Dimension	A	B	D	G	H1	H2	L	L1	L2	APS
DN40	125	65	90	65	88	108	33	168	36	060
DN50	140	78	105	65	88	108	43	168	46	060
DN65	152	80	124	65	100	120	46	184	49,5	070
DN80	159	91	137	65	109	129	46	204	49,5	080
DN100	178	107	170	90	120	140	52	260	55,5	090
DN125	190	130	197	90	133	153	52	268	59	110
DN150	203	142	226	90	155	175	52	298	59	130
DN200	238	167	279	125	172	202	60	390	64	140
DN250	268	207	336	152	197	227	68	458	72,5	160
DN300	306	232	396	152	255	285	78	532	81,5	210
DN350	340	293	446	175	255	285	78	532	81,5	210
DN400	388	322	500	175	289	319	102	602	105	240
DN450	415	350	545	210	328	358	114	722	118	270
DN500	441	384	600	210	348	378	127	758	130,5	300
DN600	505	445	718	210	408	438	154	888	158	350
DN700	624	505	910	300	464	494	165	924	169	400

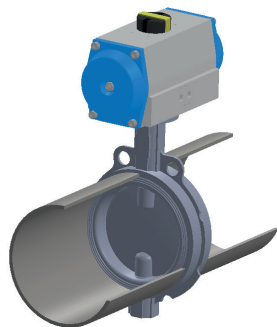
DN800 - DN1200 by request

Assembly variants for actuator mounting „parallel to the pipe“

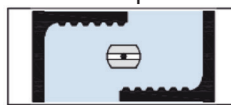
Assembly version: **H** (double acting + single acting)

-Safety position: spring to close, clockwise rotation default: clockwise „closed“

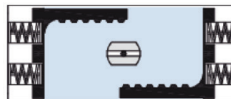
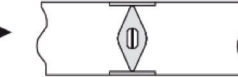
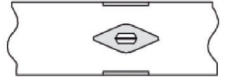
-to DIN EN 15714-1



90° switch position

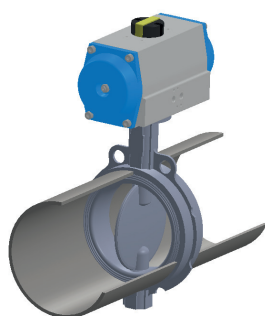


0° basic position

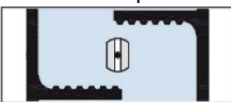


Assembly version: **F** (double acting + single acting)

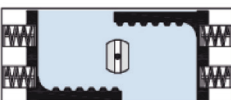
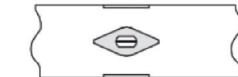
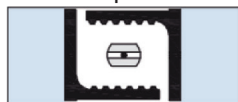
-Safety position: spring to open, counter-clockwise rotating



90° switch position

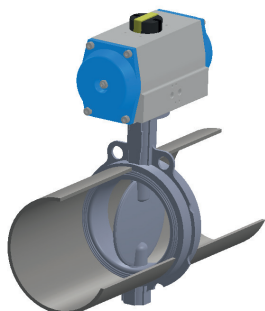


0° basic position



Assembly version: **G** (double acting + single acting)

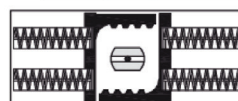
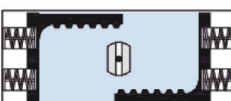
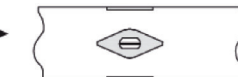
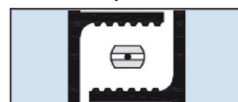
-Safety position: spring to open, clockwise



90° switch position

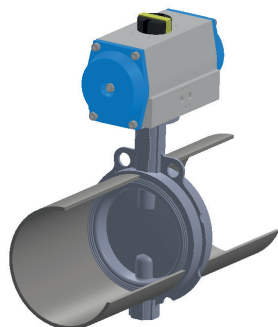


0° basic position

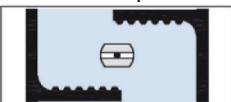


Assembly version: **E** (double acting + single acting)

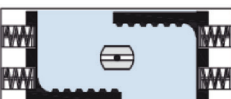
-Safety position: spring to close, counter-clockwise



90° switch position



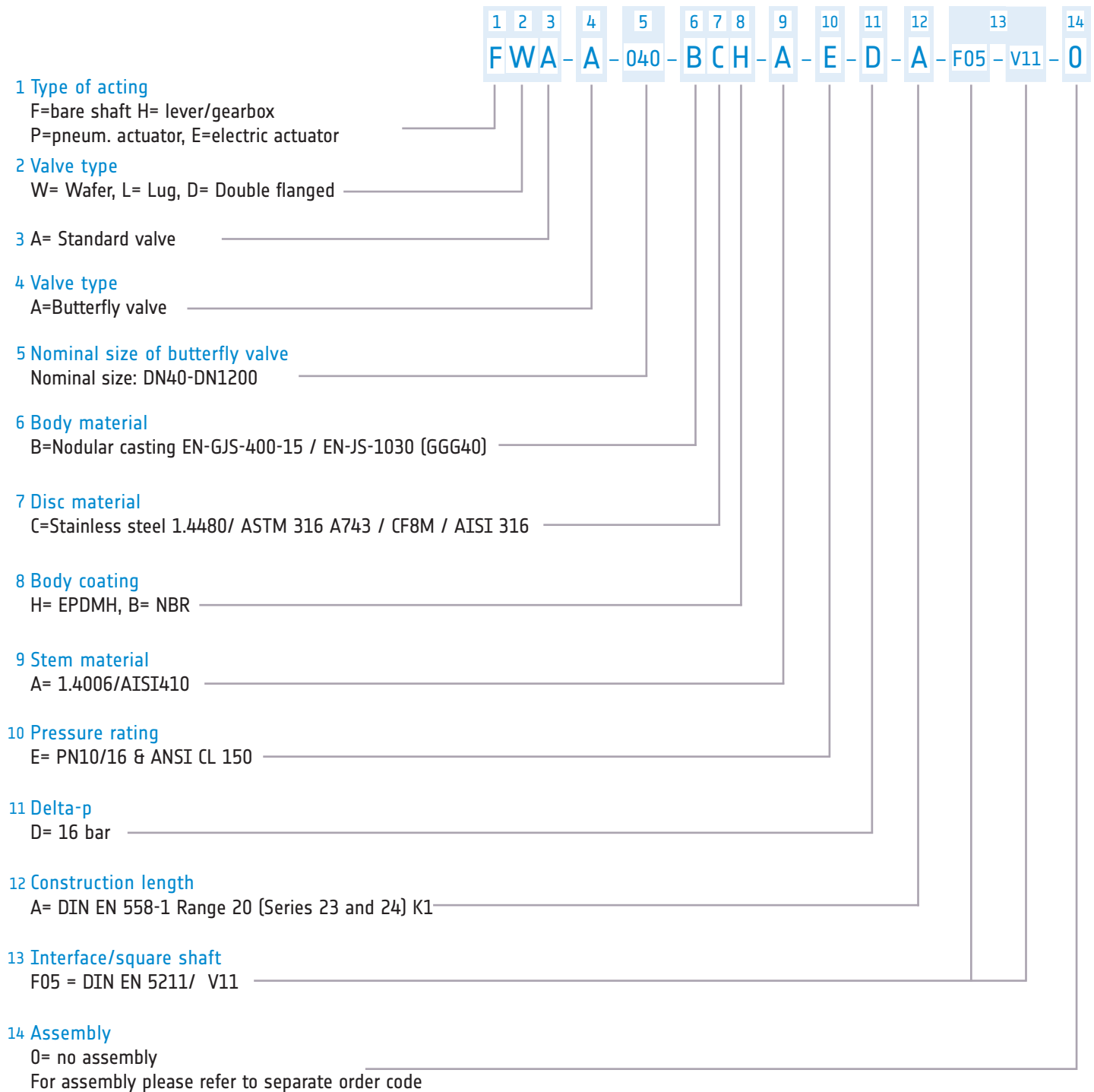
0° basic position



Actuator mounting „crossmount to the pipe“ on request.

Order code

Order example for resilient seated butterfly valve DN40 with bare shaft



Service hotline for questions and information:

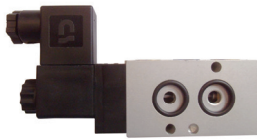
+49 (0) 22 24 / 98 83 20

Excerpt from the airpower product portfolio

Positioner



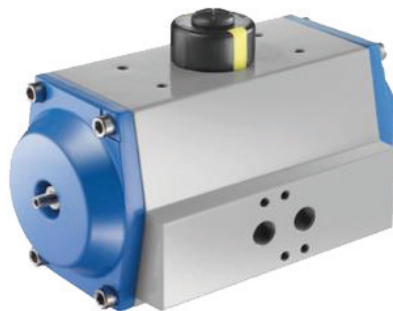
Solenoid valves



Limit switch box



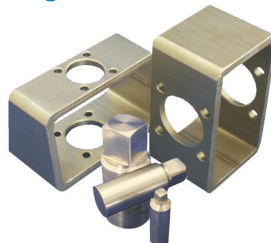
Manual gearbox



Pressure booster



Mounting brackets and couplings



airpower | 
europe gmbh
competence in actuators, valves and more

Maarweg 30
D – 53619 Rheinbreitbach

Tel. + 49(0)2224 / 988320
Fax. + 49(0)2224 / 9883219

info@airpower-gmbh.com



For Agent

www.airpower-gmbh.com